



OPUNAKE & COASTAL NEWS

Vol. 24 No 1, January 30, 2015
www.opunakecoastalnews.co.nz

Published every
Thursday Fortnight

Phone and Fax 761-7016
A/H 761-8206
for Advertising and Editorial
ISSN 2324-2337, ISSN 2324-2345

Inside...



On a sad note we farewell Brian Munro. See page 5.



Getting down to tin tacks in the planning of the Okato 150th celebrations. Turn to page 9.



James Langton and Sonny Bill mix it up a bit. See page 17.



Dale Copeland's book launch on assemblage. It's held at Percy Thomson Art Gallery, Stratford. See page 22.



Opunake's purpose built post office building.

Appeal to retain Post Office building

A post office has stood on the corner of Tasman and Havelock streets in Opunake for 55 years. The building will however cease to exist as a post office as Chorus are not renewing the lease on the building.

Graeme and Judy Dodd have run the service in combination with Lotto for over 20 years as Opunake Post & Lotto. It is a well run and very busy business and the likeable couple provide a exemplary service to the town.

An ATM machine is also housed in the building.

New Plymouth Member of Parliament Jonathan Young, among a number of local and national politicians contacted by the Dodds, joined with others in appealing to Chorus to reconsider and to extend

the lease on the building.

"Rural New Zealand needs to have really good services for the town and the area. Corporate New Zealand needs to be mindful of this and it would be good if they were positive and proactive in supporting our community," said Jonathan Young.

He added that he understood "through the grapevine" that Chorus was reviewing all their properties around the country.

South Taranaki mayor Ross Dunlop said he had been "concerned about it" and had contacted Chorus directly and got put onto the person responsible.

"Chorus were adamant that they wouldn't extend the lease. They wanted it for their own use. They didn't want a tenant."

The mayor added that he

didn't want to see an empty derelict building in the town. Also "I'm particularly concerned if the post office and all the things that go with it were lost to the town."

The last two decades have seen big changes in New Zealand Post which originally also controlled telecommunications. In 1987 the original Corporation of New Zealand Post Office was split into three arms: the state owned enterprise NZ Post, Telecom which was privatised and also Post Bank. Telecom was subsequently further split into three divisions Telecom Retail, Telecom Wholesale and Chorus, the latter being a spinoff as a result of winning the Government's Broadband initiative Crown Fibre Holdings, a Crown owned company set up in 2011 to manage Ultra Fast Broadband. Crown Fibre Holdings has invested \$929 million directly in Chorus.

Despite this investment however it appears that the Government will not intervene.

He explained that Chorus "were not a Government entity" and thus could not come under the Government's jurisdiction. Chorus is a commercial enterprise, the Government don't own them, he stated.

However he hoped Chorus would take account of local feeling regarding the iconic building which is such a focal point of the community. He urged local citizens to write to Chorus.

Commented a spokesperson from New Zealand Post: "We are aware that the owners of the Opunake Post and Lotto

franchise are coming to the end of their lease agreement. Our local Franchise Regional Manager is in Opunake this

week talking to Graeme and Judy Dodd on next steps. We will update customers when we have more information."



A mural on the side of the building depicts the former Opunake Post Office which was diagonally across the road on Tasman Street built over a hundred years ago.



Penniall Jordan

PLUMBING • HEATING • GASFITTING

The heat is on!

We service all of Taranaki

191 Broadway – Stratford Ph 0800 765 533

www.pennialljordan.co.nz

5887776AA

FEBRUARY PROMOTION

Buy any two drinks from the **Coco-Cola 1.5L range** and go in the draw to WIN a **4 BURNER BBQ** Sunglasses, Beach Towel & Cooler Bag

From your Local Supermarket

4 SQUARE 45
77 TASMAN ST
OPUNAKE
06 761 8668
OPEN 7am to 9pm EVERYDAY!

HARDINGS

FUNERAL SERVICES LTD
17 REGENT ST HAWERA

*Our professional attention to detail
& empathy is our hallmark*

PHONE 06 278 8633

SERVING OUR COMMUNITIES FOR 3 GENERATIONS

**Call us today to advertise on
06 761 7016**

RENTAL VEHICLES



• **CHARTER
BUSES**

• **VANS**

• **TOUR BUSES**

ALUMINIUM SCAFFOLDING FOR HIRE

\$35 per day, \$50 weekend.

More than 6 days \$30 per day.

WATERBLASTER FOR HIRE

Petrol 3000 psi 15L/minC

**Cost: Half day \$90, Full day \$120, Weekend
\$130. Friday after 3pm return Monday 9am.**

Bond for waterblaster and scaffolding \$50.

For more information contact Tracey or Christine at

PICKERING MOTORS

11 TENNYSON ST OPUNAKE PH (06) 761-8363
0800 22 11 20 Email: pickering.motors@xtra.co.nz



MEETINGS:

Sundays at 38 Tayler Street,
Eltham at 10.30am.

Phone 06 764 7358
for other Bible Studies.

Eltham Message Church

Pastor Richard Oliver

We are an independent Bible Believing Church

All are most welcome

www.messagechurch.com

OPUNAKE & COASTAL NEWS

Registered office: 23 Napier Street, Opunake
PO Box 74, Opunake

Telephone and Fax: (06) 761-7016 a/h ph: (06) 761-8206

e-mail: Advertising ads@opunakecoastalnews.co.nz
Editorial editorial@opunakecoastalnews.co.nz
Accounts accounts@opunakecoastalnews.co.nz

website: www.opunakecoastalnews.co.nz

Editor Bernice M'Kellar -
Journalists/Sales Rolland M'Kellar
Bryan Kirk

Advertising/Production: Vanessa Smith
Tina Chapman
Thursday, fortnightly

Delivery:
Registered as a newspaper.



The Opunake and Coastal News is distributed free to every home and business within the rural area bounded in the north by the New Plymouth city border, extending east to Egmont Village, and around to the edge of Stratford, south to the Hawera city border and inland to Kaponga and through Eltham.



Letters to the Editor

Coming together

I am an ex Okato person who lived there and played rugby for the Okato juniors under the coaching of Gus Wallace. Nowadays it's called Division 2. In those days, we played Star, New Plymouth Old Boys, Tukapa, Kaitake and Clifton, as well as Opunake and Rahotu. These last two were called the Battle of the Bridges, and were always torrid encounters. The Okato seniors had similar

experiences.

Since that time we have seen the rugby clubs of Okato, Opunake and Rahotu join together as the Coastal Rugby Club. We now have a Coastal Rugby League Club, and I read in the latest Opunake and Coastal News that there is a Coastal Bowling team made up of players from four different bowling clubs. To me, bringing all these sporting clubs together is a brilliant

idea.

It's really great to see people with innovative and entrepreneurial talent and skills get together. A similar thing has been taking place in Waitara, so just maybe, Patea could do something positive.

If our provinces, small towns and villages keep doing what they have been doing, sooner or later, businesses from the city may venture somewhere

around the coast to set up a small business to help our coastal community to thrive. So remember everyone, our small towns and villages here in Taranaki are extremely vital, not only to our coast, but for the whole province of Taranaki. So keep up the great work, by supporting each other, no matter what it maybe.

*Tom Stephens
New Plymouth.*

EDITORIAL: Quadbikes and kiddies don't mix safely

Just recently there have been a number of terrible accidents, including fatalities, involving tiny children riding miniature quadbikes. One six-year-old, for example, got crushed up against a fence and died at the scene in a recent tragedy in the Wellington region. Although the fact that it is legal for little children like this to ride miniature quadbikes, as long as it is in

a paddock and off the road, obviously it is still too much risk, with such young minds not yet able to weigh things up and deal with impending danger such as fast looming fences and perhaps farm animals getting in the way.

Admittedly, these machines may be small, but they still pack a lot of power to be safely harnessed and often this is beyond the capabilities of small children, physically

and intellectually at this early stage of their lives.

Between 2008 and 2012 more than 700 New Zealand children under the age of nine were injured in quadbike accidents and too many lost their lives.

The message is clear: legislation needs to be urgently passed to make it illegal for such very young children to be on quadbikes and probably motorised two

wheelers, as well.

What should be the cut off age? Well that needs further close scrutiny of an expert nature, perhaps at the Parliamentary Select Committee level.

Let's hope that this year's Parliamentary legislative programme includes such vitally needed reform before any more needless deaths occur..

B.B.C. The message is

I have tried to promote the Christian message through these BBC (Bible Believers Corner) articles. In spite of the stories, the logic, the theology and the science, there lies a dimension far deeper and greater than anything I have written.

St Paul said it best in his first letter to the Corinthians chapter 13. Even if I have supernatural gifts, and can heal people, speak in languages I never learnt, perform miracles, all in Jesus name, but don't have love, then all I do is useless. I may understand all of the book of Revelation, know what

the mysteries of God are, and be able to successfully argue for creation instead of evolution, but if I don't have love all that knowledge is worthless. And even if I fight for the poor and downtrodden, sacrifice my life for others, even willingly accept punishment, if it's not done in love, then it is all for nothing.

We call ourselves a Message Church. The message is the same as it has always been, love.

We all need love. We may think a new partner, recovery of what was rightfully ours, having riches, power,

popularity, a new house or car will satisfy us. It won't. Without love nothing has real value, long term enjoyment or fulfilment.

Love is not an adjective, it is a verb. It's not a description of how you feel, it is what you do. But love is even deeper than that.

Real love is a person. And His name is Jesus Christ. God is love, and if you want to receive and give real love, then you have to have Jesus in your life.

How?

Meet Him. Talk with Him, get to know Him.

How?

Put aside prejudice, any preconceived ideas, and read the gospel of John in the Bible. You will then know about Him. Finally ask, either out loud, or in your own mind, for Jesus to meet and speak with you.

If you really mean it, He will.

References: 1 Corinthians 13 v1-13, Matthew 22 v35-40, 1 John 3 v11 & v18, 1 John 4 v7-8, John's gospel.

Richard Oliver

Pastor Eltham Message Church

www.messagechurch.com

New Houses • **All Farm Buildings**
Alterations • **Kitchens**
Roofing • **Decks**

For all your building requirements, contact us today

HEARTLAND CONSTRUCTION
 48 Allison Street - Opunake - Taranaki - Phil on 027 236 7129

ALUMINIUM JOINERY

Rylock

- Windows
- Bi-Folds
- Sliding Doors
- Entrance Doors
- Conservatories
- Garage Doors
- Inserts/Retro Fitting
- Double Glazing Existing Joinery
- Maintenance

Call today for a free
measure and quote

IN YOUR AREA EVERY WEEK

Ph: (06) 758 8073

Fax (06) 758 4157

email: sales@rylocknp.co.nz

Web: www.rylock.co.nz



And they are off.

Opunake Olympian inspires event

In the 1981 movie Chariots of Fire, British athletes raced across the English sands to the strains of Vangelis. On January 15, 2015, Vangelis’ iconic instrumental heralded the start of Opunake’s Peter Snell 1500 metre event. Not even the great Vangelis, however, could overshadow the ever present Peter Snell. The Opunake-born Olympic great might live in Texas now, and his health may not have been the best lately, but the statue of the great man, wearing the recently returned lifejacket,

along with nearby displays reminding all who passed by of his exploits, were a timely reminder of the inspiration behind the event. Some ran, others walked, others just enjoyed the stroll from the Peter Snell statue to the Tasman Street- Heaphy Road intersection and back again. One or two even brought along children in push chairs. Prizes were given at the finish with Matt Baxter being the fastest man, and Hannah O’Connor being the fastest woman. Katie Tahere of the Egmont

Athletic Club had cycled the 65km ride from New Plymouth in under two hours that morning to get to Opunake so she could take part in the event. “I’m one of the crazy ones,” she said. “It’s part of my training for the round the mountain.” For her and fellow club member and Taranaki walking identity Mike Morresey, it is their second time here. “I always like to support something like this,” he said. “I believe in giving back to the community and supporting the young athletes.” Former Opunake resident Mike Dudley, now living in Hawera remembers the Snell family being in Opunake. “I have certificates signed by Peter Snell back in 1972. His father used to work at the Power Board, and Peter was a year behind me at school,” Mike said. Mike was taking part along with great granddaughters, seven year old Meika and four year old Kaylyne “Kaylyne carried her great

granddad,” Mike said at the end of the event. Meika had just come from her first time competing at the Colgate Games, where she had managed four firsts and a fourth. Organiser Bill Hayward there were 92 entrants this year, compared to last year, when around 400 took part. “It went quite well. Numbers were down, though everybody enjoyed it. People are saying it should be an annual event, but it needs backing or something to fund it,” he said.

Coastal
06 752 8138

027 255 8677
Welders

**THE SUNS SHINING NOW
BUT HAVE YOU THOUGHT ABOUT
WINTER SHED MAINTENANCE?**

Call today!
We are a local company training local people.
Email us at coastalwelders@xtra.co.nz
WAREA

www.gotitcoveredsouthtaranaki.co.nz

Got it Covered
South Taranaki

Canvas work, PVC, Saddlery,
Vehicle Interior restoration, Motorbike seats, Trailer
covers, Sunshades, Tonneau covers, Swimming pools and
Sandpit covers.

Got it Covered South Taranaki
P. 06 278 8255 - M. 027 508 8958
11 Fitzgerald Lane, RD 13, Hawera
www.gotitcoveredsouthtaranaki.co.nz

**BRIAN HILL**
BD HILL BUILDING

- *New homes
- *Alterations
- *Rotary cowsheds
- *Herringbone dairy sheds
- *Concrete driveways

- *Bridges
- *Pre-cast silage pits
- *Hay barns & implement sheds
- *Concrete races
- *Repair work

*We are a licensed building practitioner and Master Builders member.
Experienced in the design and consent process.*

**0274 442 703**



SUPREME WINNERS FOR THE BIZLINK AWARDS 2014



**CLEGG'S**
FUNERALS & MONUMENTS

Part of Hawera Since 1926 we're here to help:

- Experienced and qualified, caring staff.
- 200 seat chapel and reception lounge.
- Live web casting and excellent sound system.
- FDANZ pre-paid and pre-planned funeral options.
- Full monumental headstone and plaque services available.

Phone (06) 278 8088
268 High Street, Hawera 4610, Taranaki
www.cleggsfunerals.co.nz



SHOE & BOOT SALE

by SCARPAS David Deacon

Also

SHOE, BAG & LEATHER REPAIRS

244 Broadway
STRATFORD
Ph (06) 765 5591
Fax (06) 765 5594

**Boys & Girls School
Sandals available
at very competitive prices**



www.headstonewarehouse.co.nz

*Headstone
Warehouse*

WHERE YOU GO FOR HEADSTONES

Corner Collins and High Sts, HAWERA
Ph: 06 278 5518

209 Coronation Ave, NEW PLYMOUTH
Ph: 06 759 9975

NurseryRhyme Ltd
158 High St, Hawera
Ph: 06 278 8035

SALE BABY MANCHESTER



Blankets, Sheets, Duvets, Gauze throws,
Insect Nets, Bibs and much more.

See our lovely summer collection of baby,
toddler & up to 5/6yrs clothing & stunning
range of gifts.

FREE GIFT WRAPPING - Laybys Welcome

HOURS - 9.00am - 5.00pm Mon - Fri
9.45am - 1.00pm Saturdays



S.O.S

Specialist On Scrap Metal
RECYCLING and RECOVERY

Cash 4 Scrap

We are also available for

Specialist Outdoor Services

Demolition Work - Total Section Maintenance - Tree
Maintenance - Earthwork - Firewood - Lawnmowing -
Waterblasting - House painting - Removal of
Greenwaste/Rubbish

25 year experienced independent contractor
Taranaki owned

Contact: Dave Collins

027 605 8437 - 31 King St, Opunake



Community comment A year to look forward to



Cr Bonita Bigham

Tena koutou katoa. It's hard to believe that we are already a month into 2015. For most people, the summer holidays are already a memory, and the same can be said for your Councillors and Council staff.

Meetings have started again,

including the first Egmont Plains Community Board meeting this week. The Board is looking for someone who is community-minded, a person with great communication skills to fill the vacancy left by Sharon Arlidge who has moved to Wanaka. The other criteria and the appointment process will be advertised in community newspapers in the coming weeks, so if you are interested then look for those. We also intend to move the Board meetings around the whole of our ward to allow better access to even more communities, including marae, so come along and have your say at the meeting nearest you.

While our recent stretch of fine weather has been perfect for holiday-makers and locals alike, the dry conditions

mean that there is a restricted fire ban in place requiring a permit to light any fires. See your local Library Plus or ring Council to apply, and keep yourself, your neighbours and your property safe.

Also at this point in time there are no water restrictions anywhere across the district, again thanks to Council's heavy investment in the upgrade of water treatment plants and piping over the years. However that doesn't mean we can be wasteful of the precious resource, and we should always remain mindful of conservation wherever possible. The past two summers have remained restriction-free, so with all of us doing our bit this can become the norm for our district rather than the exception during dry summer months.

Congratulations to the team coordinating Opunake's 150 year celebrations, a wonderful array of events and activities with something for everyone. My whanau is looking forward to hosting a group of American high school students at Waikura Marae in Manaia for nearly a week in mid-February. High on their itinerary will be the Opunake Community Picnic as well as visiting Parihaka, the lighthouse, Mount Taranaki, surfing, visiting Opunake High School, the Manaia Pools and walkways in both towns. We live in a beautiful place, full of history with amazing things to see and do. Let's look after and out for each other to ensure it always stays that way.

Mauri ora.

Councillor Bonita Bigham

Please conserve water say South Taranaki District Council

As the last couple of weeks have shown us - summer has now arrived along with the hot, dry weather.

While it is looking to be a great kiwi summer, it is crucial to immediately conserve water wherever possible to make sure there is enough to go around before formal restrictions need to be introduced.

Please fix leaks on your property as soon as you find them, notify the council about other leaks by calling 0800 H2O FLOW (0800 426 3569), and remember

to use water wisely.

Here are some tips for how you can conserve water over summer and help ensure there's enough to go around:

Accept a dry lawn. Grass becomes dormant during periods of drought, but rejuvenates naturally when winter approaches.

Let your grass grow slightly taller in the summer. Longer blades promote deeper rooting and shade the root zone, reducing water loss.

Use a broom to clean driveways and paths. Sweeping will get them clean without wasting water.

Water your garden in the evening. Give your gardens a light water at dusk (between 7 and 9pm). If you water your garden in the middle of the day, it evaporates.

Cover your swimming pool if you have one. This will reduce the amount of water lost through evaporation by up to 90 per cent..

Take short showers instead of baths. Turn the tap off while brushing your teeth.

Defrost frozen food in the fridge overnight instead of using running water. When choosing a dishwasher, washing machine, toilet or shower head, **select ones that are water-efficient.**

Only wash full loads in your washing machine or dishwasher (unless they have a setting for half loads). **Cool milk, wash yards sparingly and ensure farm pipes and troughs are leak free.**

Don't let the fun stop this summer: Playground safety tips

Every day 11 children are hospitalised because of a serious fall injury. "These are not small scrapes, sprains or bruises, but injuries involving children falling and not getting up--such as serious breaks, spinal injuries and traumatic brain injuries," said Ann Weaver, Director of Safekids Aotearoa. Serious fall injury is also a major economic burden. ACC claims costs from child falls amount to \$45 million per year.

Don't let a serious fall injury ruin the fun for your child and the whole family this summer. Remember that it's social time with the kids, Not social media or Facebook time in the park. Active supervision won't be hard - The kids will be calling you to watch them play, climb, jump and swing, so join in the fun!

Check that playgrounds have well maintained shock absorbing surfacing. When your children fall, they are less likely to be seriously injured landing on rubber, synthetic turf, sand, pea gravel, wood chips or mulch.

Many playground injuries involve preschool children falling off playground equipment that is too big for them. Big kids can also get injured when they play with equipment for preschool kids. Watch out for age appropriate signs and use good sense to determine if the play equipment is suitable for your child.

Keep an eye out for rusted, broken or vandalised equipment, sharp and pointed objects (such as glass and exposed nails) and dangerous surfaces. Report these to your local council immediately.

Dress appropriately. Necklaces, purses, scarves or clothing with drawstrings can get caught on equipment and strangle children. even helmets can be dangerous on a playground, so save those for their bikes.

L
A
W
Y
E
R
S

OPUNAKE LAWYERS

Thomson O'Neil & Co.

Our Opunake Office is attended by:

Robert England on Wednesday & Fridays
for buying and selling houses, farms & businesses;
trusts, wills and estates.

Neal Harding on Thursday, for residential
sales and purchases, family, district & criminal court
matters, civil & business matters.

FOR ALL YOUR LEGAL REQUIREMENTS

30 TASMAN ST, OPUNAKE
PH: 761 8823



Taranaki wide sales, hire and service.
Free delivery, competitive prices.

MOBILITY SCOOTERS
and all living aids - we'll help you
with whatever you need.

Kevin & Marilyn Bromell
132 HIGH ST - HAWERA
Ph: 06 278 8072 - Freephone 0800 765 763
www.mobilityandmore.co.nz

**IHAIA
MOTORS**

for
A GRADE REPAIRS

- Tyres
- Batteries
- Lubes
- W.O.F
- Panel beating
- Painting
- Farm Bikes
- LPG
- All mechanical repairs
- Insurance work
- Radar Detectors

**AT COMPETITIVE
PRICES.**

Tasman St, Opunake
Ph (06) 761-8502

OBITUARY: Brian James Munro, dentist and coastal identity, born 1925, Opunake; died December 22, 2014, Opunake.

Brian Munro, who died three days before Christmas, aged 89, lived nearly all of his life in Opunake. He often remarked that with the ocean at his doorstep and the picturesque mountain looming behind, there was no other place he'd rather be. He treasured the outdoors life that Opunake and the surrounding district offered, and in between the demands of running his dental practice, raising - with wife, Kathleen - a family of six, and involving himself in community life, Brian made the most of the natural attractions within easy reach.

Among his favourites were a day on the mountain's slopes (in recent years he had settled on 28 as the number of times he scaled the summit), or an evening spent surfcasting for snapper off Maungahume Beach, south of Opunake.

Brian was born in Opunake in 1925, the eldest of James and Mary Munro's five children. He attended Opunake Convent School, and also the Inglewood Primary School for the three years that the family lived there. When he began

at Opunake District High School in 1939 there were 48 pupils in the Form 3 intake, but he was the only one who completed Higher Leaving Certificate at the end of 1943.

In those years World War II was escalating. Brian completed army and airmen training courses, but active service never held any appeal. His goal was to attend university and acquire a dental degree.

In 1944 he enrolled at Otago University's dental school, disregarding his mother's wishes that he do a medical degree. Brian completed his degree in 1950 and was awarded a Bachelor of Dental Surgery in May 1951.

By his own admission he was single-minded in his pursuit of his degree, and paid his own way through university. He spent three summers working at the Burnside freezing works, and also did a summer stint at Dunedin's railway yards. Only once did he return during the holidays to the family home in Opunake, a two or three day journey by railcar and ferry.

Brian's fondest memory

of his university years was meeting his future wife, Kathleen O'Connell. They met at a dance in St Kilda in 1945 and married in Dunedin in January 1952.

Armed with a dental degree, Brian had never imagined there was any prospect of his returning to Opunake to work. He accepted a position as a Department of Health dentist in Dunedin. But a quirk of fate suddenly opened the way for a return to his hometown. Graham Hammond, who had been Opunake's dentist since prior to WWI, was ready to retire and wrote to Brian, offering to sell him his practice. Brian accepted, and in 1953 he, Kathleen and new-born daughter Christine moved to Opunake.

His dental surgery, at 81 Tasman St, served the town and district for the next 40 years.

During his working years Brian was a man of relentless action. His sports achievements included being runner-up in the javelin at the Taranaki athletics' championships. Later he was heavily involved as a coach and administrator for

Opunake athletics, holding the job of race starter for a number of years. He was active in surf life saving at Opunake Beach, and was a single handicap golfer, once winning the Opunake club championship. He and Kathleen regularly played in interclub tennis tournaments. Brian loved jogging, surfcasting, attending the races, walking and climbing in Egmont National Park and, of course, watching rugby, whether the participants be his sons, Opunake seniors, Taranaki or the All Blacks.

Life wasn't just about sport. Brian was active in Lions for many years at both local and regional level. He was a lay reader at the Opunake Catholic Church, and for many years he acted with Opunake Players and also sang with church and community choral groups.

Brian and Kathleen celebrated their golden wedding anniversary in January 2002 with a family gathering in the Surf Life Saving clubhouse on Opunake Beach. After Kathleen died in 2004 Brian continued living at the family home in Fox



Brian Munro as a young man.

St, but in January 2012 he became a resident of the Opunake Rest Home, where he spent the rest of his days.

He is survived by his sister Marie Walmsley, his

six children - Christine, Paul, Michael, Helen, Tim and Clare - and nine grandchildren.

Mike Munro

Big Day looms for Coastal Care

The Coastal Taranaki Health Trust otherwise known as Coastal Care would like to thank all those who bought tickets in the raffles at the recent Beach Carnival.

The lucky winners were Mystery Weekend - Chris Cook; Large Hamper - Debi Whitehead; and Small Hamper - Faith Araba.

Members of the public were able to view a slideshow of photos taken during the demolition and construction to date of the new building on a large TV screen.

The construction is on track and the whole site is starting to take shape. The old Ambulance Garage has been demolished and removed and siteworks are continuing with an excavator on site levelling and the formwork for walkways set out.

Inside the building the first coat of paint has gone on, ceiling tiles are 85 per cent



A date has been set for the big opening, as finishing touches are being put on the new Opunake health centre.

complete, and the electrical and plumbing work continues with the installation of hot water cylinders, sink connections and stormwater. Joinery has been delivered and is being installed room

by room.

The plan is to have a blessing of the building in early March with the official opening on April 2, and the building open for business after Easter.

Give your child a *brighter* future

We now offer face to face tutoring with a live tutor, online and in real time.

Free assessment and ongoing progress reports.

NEW! **KipOnline™** connect with your tutor from home

✓ Maths ✓ English • Tuition available in centre or online up to Year 11

Kip McGrath™ EDUCATION CENTRES

Book your **free assessment** today

Meads Motorcycle Service

9 Main South Road Manaia

Ph 06 274 8216 Mobile 027 2104673



For all Your Farm Bike Needs

The Cottage

Rest Home - Opunake

Providing Community Service
Meals on Wheels
Daycare and Respite Care
when beds are available

Please phone the Cottage on 761 8009 for further information.

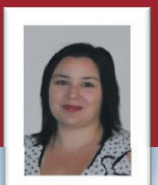
Brian Darth Funeral Services

"We are here for you 24 hours a day"

We are committed to providing quality service, and are available 24 hours a day to personally answer your calls
We cover all districts

Stratford 06 765 7672
Hawera 06 278 7672
New Plymouth 06 758 7672
Email briandarthfunerals@xtra.co.nz
www.briandarthfunerals.co.nz

17 Nash Road
PO Box 218
Stratford



St Mary's Diocesan School Prizegiving



Bree-Anna Langton of Opunake, Dux for 2014

Bree-Anna Langton of Opunake was dux at St Mary's Diocesan School last year. A weekly boarder at the school, she was Head Girl, student Board of Trustees representative, and head chorister of St Mary's Choir, as well as captain of the Senior A Basketball team. She was also a member of the Kapa Haka Roopu, as well as the school golf team and last year's Stage Challenge production. Next year she will be studying towards a Bachelor of Health Sciences at Otago University.

Special Awards. Amy Jensen-Schmidt Sports Captain's Trophy. Kyra White Sports Captain's Trophy. Rebekah Trethewey Sports Woman of the Year.

Cultural Awards. Megan Jackson. The Bradding Trophy Scholarship for Music Tuition. Katelyn Kane. Stratford Jaycees Junior Speech Cup. Sophie Burns. Justine Muter Cup awarded to most

promising junior chorister Junior Young Musician of the Year Award.

Yoshino Shinjo. Wilcox Junior Music Cup awarded to the junior winner of the St Mary's Music Competition. Gael Riddle Cup Junior awarded to the Most promising Junior Instrumentalist. Belgrave Family Cup awarded to the student most worthy of encouragement.

Lizzy Good. Leigh Jannings Cup for most outstanding musician awarded to the senior winner of St Mary's Music Competition

Jane Kim. Pease Trophy awarded to the beginner winner of St Mary's Music Competition.

Ellen Hodder. Moss Cup Senior Speech Winner. Briana Blake-Taylor Mellow Trophy for Arts Captains. Samantha Woollett Mellow Trophy for Arts Captains. Bree-Anna Langton Head Chorister Cup. Selina Padrutt Senior Young Musician of the Year Award. Ielish Goble. Mana Wahine Award Outstanding Maori Student at St Mary's Diocesan.

Special Character Awards. Olivia Singfield

Year 9 Religious Education Prize. Molly Hutchins Helen Young Memorial Prize – Junior Helpfulness. Eleni Pickering-Gibbs

Year 10 Religious Education Prize. Heavenly-Rose Kieft Year 11 Religious Education Prize. Eva Langton Josephine Rutherford Memorial Prize for senior helpfulness. Edie Thomas Centennial Jubilee Scholarship for a Year 11 Student entering the senior school. Ellen Hodder. Year 12 Religious Education prize. Bishop's Prize for creative contribution to the school community. Selina Padrutt Beryl Small Chalice for Head Sacristan. Sandy Williams Award for nurturing Christian growth. Laura Taunt. Year 13 Religious Education Prize

Makoto Yamada and Grover Tray. Student service in addition to, above and beyond the call of any formal duties they may have, Responsible, Reliable, Pleasant, Cheerful, always looking for situations where they can help.

Gold Award. This is the most prestigious award in the school and is always made at prize giving to qualified recipients. In essence, it is the award that most embodies all the characteristics of what it means to be a St Mary's student. The main criteria involves the displaying of the characteristics of respect, responsibility, perseverance, service and care as well as being a successful learner, resolute woman and courageous leader. Paige Garner and Bree-Anna Langton.

Leadership Awards. Alyx Devlin. YMCA Trophy for Excellence in Youth Leadership. Erin Tuaine. Kirsten McGregor Trophy for Head Boarder. Angie Edgcombe. Marchant Centenary Prize for most helpful senior student in the boarding house.

Roka-reni Osborne. Rachel Laurence Trophy for Deputy Head Girl. Bree-Anna Langton Katherine King Trophy for Head Girl.

Academic Awards. Saman-

tha Greenhill. Porritt Prize for Top year 9 Student. Kayla Bourke. Wisniewski Cup for Diligence in the Junior School. Alexandra Howard. The Marshall Cup for Junior Language. Megan Poehler Maree Todd Junior School Excellence and Participation. General all round above average student and good sports woman/musician

Eva Greensill. Porritt Prize for top Year 10 Student. Heavenly-Rose Kieft. Big Jim's Nursery Award for Agriculture. Edie Thomas Keynesian Cup for Business Studies. Lizzy Good. Porritt Prize for top Year 11 Student. Kylie Collins. Senior Geography Award. Ellen Hodder Olex Cables Trophy Best NCEA Level 1 Aggregate. Calvert Cup for top Senior English Student. Girdwood Cup for outstanding effort and diligence in class as well as extra curricular activities. Porritt Prize for top year 12 Student. Sarah Currie-Newton. Star Award for Best all round STAR student. Claire Drake Technology Award for top Senior Technology student. Angie Edgcombe Gateway Award. Best all round Gateway student. Paige Garner. Senior Visual Art Award. Best NCEA Level 2 Aggregate. The Stewart Family Cup. Senior Physics Award. Science Cup for top all round Senior Science Student. Sutton Cup for top Senior Art Student. Bree Anna Langton. Jennie Petrie Challenge Mathematics Cup for best all round mathematician. Catherine Richmond Trophy for the student contributing the most effort in school. Karina McCallum History Prize for top Senior History Student. Classical Studies Prize for top Senior Classical Studies Student.

Makoto Yamada for top ESOL Student.

Paige Garner. Proxime Accessit. Runner up to Dux. Bree-Anna Langton. Porritt Prize for top Year 13 Student. University of Otago Dux Scholarship. Travers Trophy – Dux for 2014.



VOSPERS
Funeral Home

Part of New Plymouth Since 1933

Experienced staff who make a difference

- Personalised funerals to meet your needs
- Modern chapel which seats up to 110
- FDANZ Pre-planned funeral options
- Full monumental & headstone services

PROVIDING A 24 HOUR SERVICE

PHONE ANYTIME - 759 0912

257 Devon St East, New Plymouth

www.vospers.co.nz

One Stop Shop - Mobile Recording

Public and Private Functions,
Corporate, Conferences, Music Videos,
Documentaries. Graphic Design on CD/DVD/BD.
Creation & Production of Original Music.
Editing Audio, Video & Still Pictures.

Colour Conversions
Recording Studios Limited

Cell. 027-897-8941

2D & 3D Video and High resolution Audio.

Duplication and Disc Face Printing of
CD, DVD and BD.

Explore the possibilities of Multi-camera
Multi-track recording for each event.



Accident & Medical Clinic



Clinic hours 8am-8pm
No appointment needed
24 hr urgent medical care
X-ray
Pharmacy

OPEN EVERY DAY

Richmond Centre
8 Egmont St New Plymouth Ph(06) 759 8915

ACC and RNZCGP Accredited

B & R Barron
BUILDER

2475 Surf Highway 45 OKATO
PH/FAX 06 752 4044 MOBILE 0274 448106
Email: barronz@xtra.co.nz

- Houses
- Alterations
- Decks
- Bathrooms
- Kitchens
- Roofing
- Fences
- Concrete
- Cowsheds
- Farm Buildings

by the wind wand

Major kiwi milestone at Rotokare

In December last year, the 30th founding kiwi arrived at the Rotokare Scenic Reserve for the Taranaki Kohanga Kiwi at Rotokare project. Its arrival has been the goal for the Taranaki Kiwi Trust and Rotokare Scenic Reserve Trust since 2012 when the first founding kiwi arrived at the Kohanga site.

“It’s not just about getting 30 kiwi into a predator-free breeding site, but for this project, establishing a genetically unrelated founding population was always a priority,” says Sue Hardwick-Smith, Chair of the Taranaki Kiwi Trust.

“This important element of the project not only sets this breeding population up in the best way

possible, but has meant an enormous amount of work, which in turn has increased important

kiwi skills of volunteers significantly, and been very rewarding.”

Mike Weren, chair of the Rotokare Scenic Reserve Trust adds. “If we had simply focused on establishing a kiwi population of 30 founders, we could have worked intensively in only a few Taranaki forests to achieve the outcome. Instead, we have worked in over 30 different locations throughout the region - it has been an in-



Cuddled kiwi. Photograph kindly supplied by Rotokare Scenic Reserve Trust and Taranaki Kiwi Trust.

credible undertaking by many people over the past two and a half years. An amazing result all of Taranaki can be proud of”.

Says Sue Hardwick-Smith “The release of the 30th founding kiwi brings together all the hard

working volunteers, the many kiwi release sponsors who have generously contributed to the project, and indeed the many land-owners from all over the region who have opened their properties for this special cause.”

Sanctuary manager Simon Collins said they will be developing of ongoing population surveys at the kohanga site.

“Periodically from then on, we will be able to release large numbers of kiwi to appropriate sites all over Taranaki, at a fraction of the cost traditionally spent on returning kiwi to the wild,” he said.

“Imagine, instead of releasing one kiwi at a time to a particular location, we will be able to release kiwi in tens at a time. Our biggest challenge over the next few years will be finding enough appropriate sites that meet the necessary criteria for releasing kiwi. They require large areas of habitat, with good predator control, and stable ongoing management and ownership of those land areas”.

The Taranaki Kiwi Trust and Rotokare Scenic Reserve Trust look forward to the first ‘export’ from the project, which will likely take place as early as 2016.

In the meantime many of those kiwi released already have been breeding, and the estimated

total number of kiwi currently at the Rotokare Scenic Reserve is between 50 and 60 individuals. Visitors to the reserve can routinely hear kiwi from dusk onwards.

Look after your daughters

Today farming is a business, and for a business to be profitable, its assets must gain maximum return. So what is the farms biggest asset? The land. And to gain maximum return effort must be put in to pasture management.

For a host of reasons, weather being the biggest, it’s not as simple as let’s just get down and grow truckloads of grass.

Ryegrasses are doing their most important thing at this time of year in Taranaki - reproducing, and they don’t only reproduce by throwing up seed heads. Down below in the base of the plant, new tillers are growing, commonly called daughter tillers. When a tiller throws up a seed head, it is at the end of its life, and it produces these ‘daughter’ tillers to become the new growth for the com-

ing year. If these daughter tillers are mistreated in any way, the consequences are depletion of ryegrass in the pasture sward in the coming year.

Look after these daughter tillers. Be consistent with grazing, don’t over graze- which takes away plant reserves and don’t over grow, which shades out the growth at ground level (daughter tillers). Start with this practice

in your newest pastures and best performing paddocks.

Measuring your pastures is a very important tool in pasture management to ensure persistence. Why? So your pastures are not over grazed.

Measuring your pastures can give you information on your best performing paddocks, and affords you the opportunity to view your paddocks a little closer than just by eye flying down the track on the motorbike.

Taranaki is subjected to attacks by various pasture pests; grass grub, black beetle, Clover root weevil, Argentine stem weevil, Tasmanian grass grub, and more. It is a good time now to start looking for signs of pest appearance. Take a spade and dig some random holes to see what pests are lurking below. When the insect damage is visible, it’s normally too late, so identify pests now before they really start to cause some major damage.

Ponder this thought, if you could increase pasture production on your farm by 5%, imagine how much money you could save. Implement some strategies such as these, and this is very achievable.

Bruce Paterson
Agriseeds area manager

Shontelles

Nails and Tans

39 Tasman Street, Opunake

Shontelle
027 446 3514

ANDREW PURSER
panelbeaters LTD

- Windscreen replacements & repairs
- Chassis Straightening
- Spoiler Kits fitted
- Private repairs
- Rust proofing
- Plastic welding
- Insurance work
- 24 hour towing

Courtesy vehicles available

FREE QUOTES

Ph/Fax (06) 278 8233
22 Cambria Street, Hawera
Mob 027 249 9489
A/Hrs (06) 278 7314
mr.fix@xtra.co.nz

kitchens

from humble to stunning

one off

gallery & factory

168 waihi road
hawera 4610
p - 06 278 4280
e - paul@oneoff.co.nz

design ~ manufacture ~ installation

designs by paul rogers CKDNZ
your only fully certified kitchen designer
in south taranaki **NKBA**

25 years making your dreams a reality

furniture

new or restored

Our next issue is Friday February 13. If you would like to advertise or send an article please do so by Monday February 9.

Precision Helicopters Ltd

Precise in nature, action and performance

For all your helicopter work

PHL
Nationwide

GPS Guided:

- facial eczema prevention
- granular and liquid fertiliser application
- weed control
- lifting

Free Phone: 0800 246 359
sales@precisionhelicopters.com



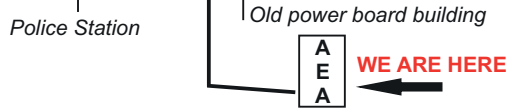
Chester Borrows
MP FOR WHANGANUI

Hawera Office
44 Victoria Street
Ph: 06 278 4059
chester.hawera@parliament.govt.nz

National
www.national.org.nz

AEA STAINLESS Jetter Tubs

Opunake Service Station
111a Tasman Street, Opunake



from The odd Bolts Box,
repair, replace, rebuild mild and stainless steels,
bolts, pins, bushes, washers or start from scratch!
Concrete cutting, yard galvanised pole repairs and
same day service!

111A TASMAN ST, OPUNAKE
PH: 06 761 8834

2007 FORD RANGER XLT

EXTRA CAB, CANOPY, TOWBAR
2.5 TURBO DIESEL
5 SPEED
POWER STEERING

\$19,995



DON OAKES MOTORS

Broadway, Stratford

Phone & After hours (06) 765 4383

The beauty of home



Hon Chester Borrows MP

Last week saw the annual Ratana Celebrations of the prophet Tahupotaki Wiremu Ratana who forged strong links with the Labour Party, which had led to seventy years of Labour dominance in the Maori Seats until the emergence of the New Zealand First Party and then the Maori Party. So as per convention, last Friday saw the political parties show up for the speeches and the 'holding to account' that goes with political office. Labour talked about the formation of the alliance between the church and the party, but had nothing to talk about when it came to results for Maori. National always regrets that

the work it has done socially for Maori such as housing on marae, Whanau Ora, Maori health and education etc, never transpires into support from the Maori constituency. The phrase of the day belonged to the Deputy PM Bill English who made the point that we need to make moves now against Maori negative over-representation, so Maori should support the current government, rather than sitting around waiting for the government they want in the future. Funnily enough, on analysis of the vote count it is revealed that Maori in General Seats vote along similar lines in proportion to the way the general population votes. Voters on the Maori Roll heavily support Labour, and there is but a sniff of a National presence in the Maori seats and always has been.

After Ratana, I took the opportunity to show some National MPs around the remote Whanganui River, spending a night about an hour's jet boat ride from Pipiriki, and visiting the Tieke Marae, and walking off to the Bridge to

Nowhere. The weather, the river and the atmosphere were pristine. I realised that while I had always been a bit jealous of the landscape of some of the South Island electorates, where my visitors hailed from, they were blown away by what they experienced on the river. The pre and post colonial history in this area is amazing, and the landscape incredibly unique. The Whanganui River connected back-country Taranaki with Whanganui and the rest of the world in the old days post World War One when steamers would come up the Tangarakau and other rivers to collect cream for butter making and on to export. It was much easier to get down to Whanganui than it was to get to New Plymouth, and if the end destination was Auckland or Wellington, then many days could be shaved off the trip. Though the product may not have been so flash after it had been stored for the steamer, then spent a couple of days on the steamer getting to Whanganui unrefrigerated. I remember a story emanating

from the Marangae Valley east of Kohuratahi, when a farmer sent his cream off on the steamer, and the can was returned need full with "Rat In" written in chalk on the lid. The can was sent back with the message "rat out".

That would have made some pretty tasty cheese I am sure. But the history of the back country had left us with remarkable scenery, history and future. The year before the Mountain to Sea Cycle Trail was opened, there were two mountain bikers picked up from the Mangapurua Landing. The following year there were 1,000, and the number has grown strongly since. There is a suggestion that the Matameonga will be opened up for other trails, with cyclists being able to ride from Ruapehu to Stratford. This of course will be fantastic for the local economy, and New Zealand as a tourist destination.

It all adds up to confirm the old adage - "don't leave home till you've seen the country".

*Chester Borrows
MP for Whanganui*

A great summer on the coast



Jonathan Young MP for New Plymouth

So far it's been a scorching summer, the sort I well remember as a kid growing up in South Taranaki. The town-

ies all love it, but out in rural Taranaki, we need the rain. Let's hope we get enough of that and soon.

This summer I've enjoyed two major events in the Opunake calendar. Firstly, the Christmas Eve parade was sensational! I've been to all the parades in the electorate, being: New Plymouth, Okato, Bell Block, Waitara and finally Opunake. Let me say congratulations to Opunake. In my view, you surpassed all the others. A huge amount of effort was entered into and it's always good to see those massive tractor units rumbling through town. It reminds us where the real work in Taranaki happens - on the farms.

Farming makes about 10 per cent of Taranaki's income. The big brother of them all

is the oil and gas sector, but I see that with the drop in the price of oil; a lot of the petroleum companies are slowing down their work programme, and that is going to be tough on a lot of people who look after that sector. With the pay-out being down as well, the dollars might not be so plentiful this year, as they have been the last couple of years. However, farmers are used to seasons ... and this is just that, a season. So I encourage you all to be buoyant about Taranaki. This is a great region to live in, and we have something special to be proud of.

The second major event I attended was the Opunake Beach Carnival. My wife Maura and my mother Margaret came with me. I enjoyed watching the big dig and can

remember when it was me searching through the black sand for the prizes! Another big attraction when I was a kid was catching the greased pig in the pen, and then there was the sack fights on the pole over the tank of water. I guess there are all sorts of regulations these days that stop that.

My mother told me that it was at the Opunake Beach Carnival that she first met my father, Venn Young. That was about 64 years ago.

Congratulations to the Opunake Lions for organising and running a great event.

Well done, I had a great time enjoying everything that was on offer.

Jonathan Young MP for New Plymouth

On this month in history: Legislative Council ceases to be

On January 1, 1951 NZ's Upper House, the Legislative Council, was abolished.

The Legislative Council was originally modelled on the British House of Lords and members were appointed

- not voted in. This body had existed since 1853 and was meant to be a legislative check on the House of Representatives draft legislation. Originally, members were appointed for life, but

there were only 15 of them. However, these numbers ballooned out to 54 by 1950.

Governments could stack the Council with sympathetic appointees. In the 1940s the Labour Government of the time did this and National (elected in 1949) vowed to abolish the Council.

SINCLAIR

FARM KILL AND PROCESSING

• Beef • Sheep • Pigs

Call Colin or Bridgitte - 06 765 4460 • 0274 629 282
121 Cordelia Street, Stratford



THE SHED SPECIALISTS

Need a shed?

You need Mike or John at Standard Timber ITM

They know how to build 'em right!

Pleased to supply the new buildings



Mike Henry



John Briggs

06 765 7800

www.standardtimberitm.co.nz



STANDARD TIMBER
103 BROADWAY NORTH, STRATFORD

0775P912

Planning meeting in Okato



Discussing the various aspects of the Okato 150th Jubilee.

There was a special meeting in Okato on Wednesday January 21, under the overall guidance of Anthony Williams, Chairperson of the Okato 150th Committee, aided by several others on the Committee, such as Kevin McFetridge (Religious service organiser), Rex Neilson (Floats Parade co-ordinator), Catherine Heads (Events co-ordinator), Rebecca Ripia (Treasurer) and Suzanne Fraser (Organiser of band entertainment). They met with senior members of organisations who have been engaged to organise various parts of proceedings such as catering, entertainment and lighting/stage management. Unfortunately, the person in charge of security (Security First) had to make his apologies.

The group met in the grounds of the old Okato primary school, where the event will be held from March 6 to 9, firstly as a whole for discussion of such things as placement of facilities and timetabling. Later, the group divided into smaller groups to hammer out different aspects of each component, such as entertainment, catering, lighting and the float parade.

A crucial person was Neil Penno of TSH, who is

charged with ensuring the sound system is of optimal quality. One important task is ensuring that sound checks are carried out for all musical entertainers. A state-of-the-art digital console system will be used.

Jenny Dobson of Dobson's Marquee and Party Hire Ltd has an important role as most activities will be held in marquees, including the dinner and cocktail event. The placement and capacity of the marquees is crucial.

Andrew Fage Catering is handling the catering. Andrew himself was at the meeting. The main meal, held on

Saturday from 6-8pm will be a buffet style affair. At 9pm the cocktail event will include canapes, with a dance for those whose energy is up to it.

Rex Neilson is pleased that, so far, 65 floats are entered, but is still keen for more to follow. Phone him on 06 752 4158 or Glenys Putt on 06 752 4200. He points out that 50 years ago they had 148 floats. "Just use your own imagination," he comments.

The entertainment side looks impressive with a jazz trio, guitar soloist, Quadraphonic (featuring Robin Wells), a Reggae band, and a local DJ to keep things lively.

The youngsters have not been overlooked with Zorb balls, clowns, fairies and the Bubble Man to keep them amused and engaged.

There will be bus tours (just \$20) from 1.30pm on Saturday, leaving from Hempton Hall – one heading south and the other heading north. They will visit various interesting places such as Puniho Pa.

If you want a bargain you won't want to miss the auction at 2pm on Saturday. Local businesses have been generous in donating products for the auction.

A picnic is also scheduled which should be a great family event. This will go from 1pm on Saturday to about 3pm.

On Sunday there will be church service at 10am with Father Tom Lawn, and Rev Alby Martin, as well as Rodney Smith conducting the worship.

The organisers must be commended for what is going to be a memorable event. Anthony is pleased at how things are going but feels the emphasis must now be on promoting the event and selling more tickets.

You can contact Anthony Williams on 06 752 8167 or 027 202 1945. The Committee's email is okato150@gmail.com



DOBSON'S

MARQUEE & PARTY HIRE LTD

* MARQUEES * CUTLERY
* FURNITURE * LINEN
* GLASSWARE * ACCESSORIES
* CROCKERY and MUCH MORE...

Wishing the Okato District all the best for their 150th Jubilee!
Proud to be a sponsor

OPEN SATURDAY MORNINGS
10am - 12am

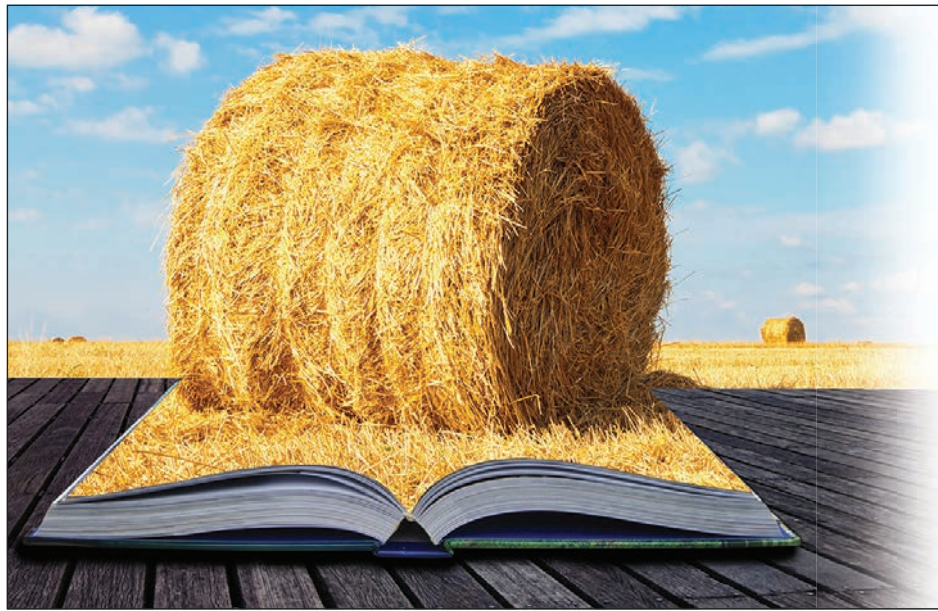
13 Oropuriri Road
Ph: 755 0068
www.dobsons.co.nz

On this month in history: Shackleton sails off from Lyttelton

On January 1, 1908 Ernest Shackleton (later Sir) of Great Britain left Lyttelton on his first expedition to Antarctica. His aim was to be the first to reach the South Pole. His ship was 'Nimrod' and thousands of well-wishers saw him off at the wharf. He

was also given a small NZ flag by Premier Sir Joseph Ward.

His three person polar party did not manage to reach the South Pole, but set the record for the closest position attained.



Agricultural advice by the book

When it comes to legal issues in the farming industry, you'll find the team at RMY Legal speak your language.



T: +64 6 769 8080 | F: +64 6 757 9852 | 0800 733 837
136-138 Powderham St | New Plymouth 4310 | New Zealand
www.rmy.co.nz

TM&DSIGN012/19a

TARANAKI'S 4WD CENTRE - QUALITY & SERVICE



SMART
\$17,990

2007 NISSAN DUALIS 2.0G
AUTO, P/S, A/C, ELECTS, AIRBAGS,
ALLOYS, ABS, 5 DR, 70KMS, BURNT
ORANGE.



GREAT VALUE
\$19,990

2005 HOLDEN COMMODORE
SS 5.7 V8
AUTO, P/S, ELECTS, AIRBAGS, 18" ALLOYS,
105KMS, SPOILER, BODYKIT, JET BLACK.



BRAND NEW
\$47,990

2014 HILUX SR5 4WD D/CAB
3.0 T/DSL
AUTO, BRAND NEW, P/S, A/C, ELECTS, REAR CAMERA,
ALLOYS, AIRBAGS, CRUISE, STYLED IN SAND ...



REAL VALUE
\$33,990

2010 NISSAN NAVARA
ST-X 450 4WD D/CAB
2.5, T/DSL, AUTO, CANOPY, TUFF
DECK, ALLOYS, 93KMS, BLACK.



SPECIAL
\$29,990

2013 VW BEETLE 1.2 TURBO
AUTO, P/S, ELECTS, AIRBAGS,
ALLOYS, ABS, 24KMS, AS NEW IN
ARCTIC WHITE.



NICE WAGON
\$31,990

2009 VOLVO XC60 T-6 SE AWD
3.0, AUTO, P/S, A/C, LEATHER, ISOFIX
SEATS, ALLOYS, AIRBAGS, 74KMS,
SUPER IN BLACK.

Hareb Deken Motors

RMVT

TARANAKI'S 4WD CENTRE - VISIT www.harebdekenmotors.co.nz

331 St Aubyn St • New Plymouth Ph (06) 759 9943
FREEPHONE 0800 289 493

A/H Mike Hareb (06) 752 7697

Ton Deken (06) 752 7405

RMVT

Each farm is different – but sugar grass works for Paul's herd.

Rural contractor Paul O'Rorke sees the different pasture and crop varieties chosen by farmers and is careful to follow their directions rather than impose his own view – unless he's asked for an opinion. Then he can tell them what works on his farm. "It's up to the farmer to talk to their merchant or

advisor about what to put in," says Paul, who owns a high producing dairy farm in the Taranaki. "Obviously I can say 'I've got that grass at home and I really do like it' but I'm not going to say you should be planting high sugar grass." He first planted Aber High Sugar Grass (AberHSG) six years ago and after AberDart,

tried AberMagic, both perennials but the latter with even more sugar, and AberHSG pasture now covers a third of the O'Rorke family's 180 hectare farm at Opunake. "We sow annual grasses for winter growth in areas going back into a crop but all our permanent pasture is going into AberMagic and clover. We have not gone back (to other ryegrass varieties)."

His first paddock of AberDart is still growing strongly, and was sown after advice from Farmlands' Opunake Technical Field Officer Neil Jury, who had supervised a comparison of different ryegrass varieties grown at a demonstration site at Pungarehu, where AberDart's performance was in the top two of



Rural contractor and dairy farmer Paul O'Rorke takes a look at the mid-summer condition of AberMagic and clover with his children (from left) Matthew, Toby and Amy.

the perennial varieties. Neil says there's been a steady demand for AberHSG. "They try it and tend to plant more because the cows love it, gives great regrowth, handles all weather, appears to have great persistence, and tillers out well into a dense sward."

Paul plans to sow the new AberHSG perennial AberGreen as part of a strategy to fully feed his herd of 550 Friesian cows year round and includes fodder beet, turnips and brassica, maize kibble (dried and crushed kernels), palm kernel and molasses at the dairy. His cows are averaging 450kg milksolids per cow in a season, which

is far ahead of the 344kg average for Taranaki herds. "Every farm is a little different. Some grasses work well on some farms, and other grasses don't like being hammered as hard so it's all about comparing apples with apples for each situation," says Paul. "If a client asks about the sugar grass, I tell them our cows like it, they eat it down, and I am happy with it. But, you know, it might not be the be-all-and-end-all for their farm."

Farming for 15 years, Paul relies on sharemilkers Geoff and Deanne Batchelor to run the farm while he is focused on rural contracting. "We are ticking all the boxes and must be doing a lot of things right." "I can't say I am seeing more milk but the cows like the sugar grass and graze it hard so they are eating more and seem happy and content." "We are definitely not considering topping or under-sowing. The cows are doing all the work."



Lukas Hitch caught this beauty at The Collins Sports centre Take a Kid fishing day.



* HEADSTONES *
* GRANITE PLAQUES *
* BRONZE PLAQUES *
* DESIGNER MEMORIALS *
* PORCELAINS PHOTOS & PLAQUES

TALK to Callum or Mandy TODAY

Showrooms @ 292 Devon St, East - New Plymouth
Miranda St, Stratford, opposite RSA (by appointment only)
06 758 8625 - 24/7

www.monumentcentre.co.nz callum@creativestone.co.nz

FORKLIFTS

CONSTRUCTION EQUIPMENT



- RENTAL
- SERVICE
- PARTS
- NEW & USED SALES



AGENTS FOR NILFISK FLOORCARE PRODUCTS



AB EQUIPMENT

31 Hurlstone Drive, New Plymouth
Shaun McKay - Sales Specialist
Ph (06) 757 5197 or 0800 30 30 90
www.abequipment.co.nz

SANDFORDS RURAL CARRIERS

Rural & General Cartage

Specialising in

- Palm Kernel
- Fertiliser
- Aggregate
- Hay & Silage Bales

Livestock Cartage

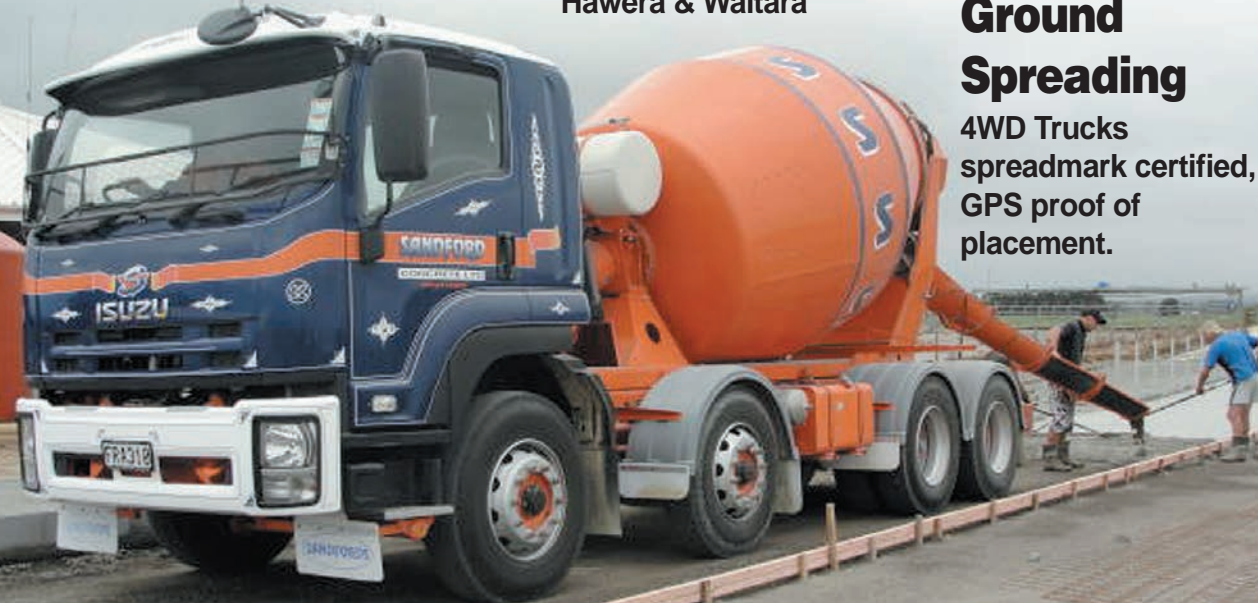
Depots: Okato, Auroa, Hawera & Waitara

Readymix Concrete

Depots: Hawera & Wiremu

Ground Spreading

4WD Trucks spreadmark certified, GPS proof of placement.



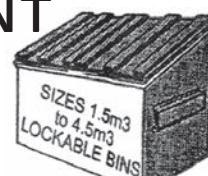
**0508 726 336 or
06 274 5852**



INGRAMS

Contracting LTD

**PERMANENT
HIRE
BINS**



LOCALLY OWNED AND OPERATED

• Ph (06) 278-4786 • 027 4458 701 • A/Hrs (06) 278-7063
Collins Street • Hawera

Until death do us part.....

Marriage and relationships are good when they work out.



Sylvia Huitson

The challenge for this next column is to look at relationships between couples. What a mine field. Having spent quite a considerable amount of years counselling couples, then, I thought it might be a useful plan to talk generally about some of the issues that cause problems in relationships. When we choose a partner, they will likely be a little different, or a lot different from ourselves. It would be impossible to find someone exactly the same, though some couples seem to be very much alike. Problems seem to arise when people don't understand or accept how different the other person is. We all think differently and see things differently. If you ask two people their perspectives on a situation then you can get two completely different viewpoints. We each have our own brain and way of doing things that is different from others. I think that most things fit on a continuum. For example, one often common issue, tidiness or lack of it, would fit on the continuum with obsessive tidiness at one end and extreme untidiness at

the other. Most people fit on this continuum somewhere, but if you get one person at one extreme (tidy to the extreme) and one at the other (messy to the extreme) then there can be problems. The tidy one can't understand why the untidy one doesn't feel the same way as they do, or vice versa. What can we do to sort this? We can try and change the other person. The other person might not want to change, or they might try and change, but are unable to keep it up. If we expect our partner to change, then how do we feel about changing ourselves? The person often becomes the problem, instead of the problem being the problem. For example the issue is tidiness (or lack of it) in the house, but often it becomes a battle and one person becomes the problem, the other becomes the one with the problem. This is where communication and compromise can help. Sit down and talk about the 'tidiness or lack of it' and what can be done about it. How do we start these conversations? Not with 'YOU'. 'You' is often a blaming word and can lead to an argument. Try starting with 'I'. "I think, I would like then you can ask the other person what they would like, or what they think. Take turns like playing tennis and hitting the ball back – gently not aced! We can also apply the continuum example to other issues we may have in the relationship. High and low libido, party animal and quiet person who likes their

Accept you are both different, and compromise on changes. I love that line in the Bridget Jones movie where he says 'I love you just as you are'. Lovely. Wouldn't it be great to have someone who loves us 'just the way we are?'

It means we are ok! Good enough! Sounds good and it would be great if it didn't just happen in the movies. I encourage people to look at what is wrong with the interaction between the two of them, rather than what the

other person might be doing wrong. Communication is a key to good relationships. Best not to try to sort stuff when you are angry. Relationships should add something good to our lives. If you need help you are very welcome

to come to counselling (charges on website).

Sylvia Huitson

Active Intentions and South Taranaki Counselling



Rusty Campbell (and Frankie escaping off stage) were on hand to award the winners of the Opunake Lions beach carnival Big Dig their new bikes. Campbell Contracting has sponsored the Big Dig at the Carnival for several years, Cheers Rusty!

own company, talker and non-talker, emotional and unemotional. You can see why relationships are a mine field. Of course relationships work best when people are both able to communicate about what is going on, and both are able to compromise or meet in the middle. While it is often hard to meet in the middle, it is the fairest place to be, and means that one person is not making all the sacrifices.

Algal bloom closes Waingongoro River Mouth

Due to high levels of blue-green algal bloom (Cyanobacteria), the mouth of the Waingongoro River at Ohawe is closed to all users until further notice. South Taranaki District Council environmental health officer, Doug Scott says Cyanobacteria is a naturally occurring algae capable of producing toxins, most commonly causing skin

and eye irritation. However some of the toxins could potentially cause sore throats, asthma, paralysis and vomiting or diarrhoea. "Visitors to the river mouth should not collect or eat fish and plant life or come into contact with the water," says Mr Scott. "Keep your pets away from the water too as they can

also be affected," he says. "Any visitors to the area showing these symptoms should consult their doctor immediately or contact the Taranaki District Health Board Public Health Unit on 06 753 7798 for further information," says Mr Scott. The river mouth will remain closed until cleared by the Taranaki District Health Board.

On Farm Field Day & BBQ

Wednesday 4th February
Barry & Rochelle Harvey's Farm

Come along and learn what Barry & Rochelle are doing differently this season. Is In-shed feeding still cost effective? Does Chicory fit into a summer feed plan?

Industry experts will be in attendance to discuss these topics and answer your questions: Natalie Chrystal - Nutritionist, Elton May - Agricom and Steven Kelly - ANZ Rural Manager.

WHEN	11.00am, Wednesday 4th February		
AT	Barry & Rochelle Harvey's farm 6 Hampton Road, Okato		
RSVP	Please RSVP for catering purposes to: Roger Dettling OR Maree Collins 027 807 0444 027 886 4418 roger.dettling@nrm.co.nz maree.collins@nrm.co.nz		

Working together to grow our dairy industry.

All hotties need a heat pump

to keep them cool in summer

Climate

The home cooling experts

Phone 769-6410
or visit our showroom:
103 Leach St, New Plymouth

At last an Architect designed home on your site for \$550K*
Total cost Move in!

Why settle for brick & tile?

Saunders Architects Tel 06 759 7430

*Other Packages from \$350,000

For all your agricultural machinery from the only locally run family owned machinery dealer in North Taranaki

GRAHAM HOUGHTON

Your local Sales Rep with a wealth of knowledge. Give Graham a ring today.



AgTraction Taranaki Sales

Waiwakaiho

027 293 2356

or 06 759 8432

www.agtraction.co.nz - graham@agtraction.co.nz

Stratford Auto Electrical

- Alarms ■ Audio Systems ■ Air Conditioning
- Reverse Camera & Sensors

www.stratfordautoelectrical.co.nz

144 Broadway North

Ph: 06 765 5824 | Mob: 027 270 7368

While the Manaia Walkway may not be as well-known as its Opunake Coastal counterpart, it still has enough to keep visitors interested, including the town's own redoubt.

When all the other frontier redoubts were removed, the people of Manaia wanted their one to stay as a reminder of their town's beginnings.

Today much of the original Manaia Redoubt still remains, and is an integral part of the Manaia Walkway. The redoubt had been built in 1880 after a force of 80 Armed Constabulary under Colonel John Roberts were ordered to set up a position on the right bank of the Waiokura Stream. Colonel Roberts had earlier been decorated for bravery fighting against Titokowaru in the 1860s. A little over a year later he would lead a 1500-strong invasion force

to Parihaka to arrest Te Whiti and Tohu.

The Armed Constabulary chose the disused pa site Te Takahe, and built a redoubt with watchtower and blockhouses for two years before they left, leaving the local Waimate Mounted Rifles in charge.

The double walls of the blockhouses were filled with gravel, to hinder any bullets from coming through. In 1885, with the Waimate Plains firmly in settler hands, the order was made to remove the redoubts, but the Manaia one stayed. The original wooden tower, the Watchtower of the Plains blew down in a storm in 1912, and was replaced replaced by the concrete tower which can be seen today. The two blockhouses still remain, apart from a few repairs and the installation of concrete floors are the last of the frontier posts still on their original sites.

Visitors to the walkway, which starts at the Maania Domain can also appreciate the efforts of local volunteers who have maintained the walkway. Forty species of native trees have been planted, attracting in more recent times the likes of the tui and the wood pigeon.



The Watchtower of the Plains.

It is only appropriate then that two of the streets in Manaia, Karaka and Patu-

kukupa refer to trees that attracted birds to the area, and to where the birds gathered



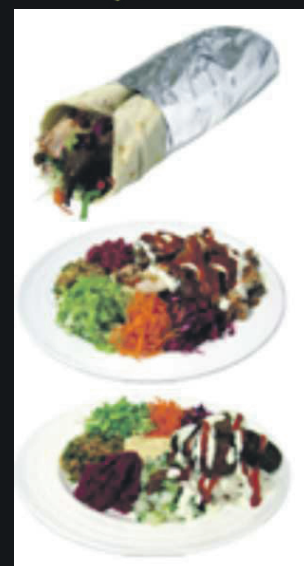
Sumela Kebab

Turkish Take-Away Food

Authentic Turkish Cuisine prepared fresh by Turkish Chefs

NOW IN OPUNAKE!

**Tuesdays
&
Fridays
from 5pm**



Mobile Catering Service for

*** Community & corporate events * Special occasions * Sport & recreation events.**
For great food and friendly service at competitive rates contact us today
on 06 751 4624 or see us on Facebook!

Taranaki farm manager wins 2014 Poultry Trainee of the Year award

Despite his youth, Adrian Paul, the winner of the 2014 Poultry Trainee of the Year Award, is something of an industry veteran. “I grew up in the industry,” Adrian says. “My grandfather started our family’s involvement in the industry 50 years ago this year by building one of the first meat chicken sheds in Taranaki. “My father, Terry Paul, took over the business in 1982, and I started working on the farm part-time while completing an IT qualification. After spending nine months in the UK on my OE I started full-time work six years ago.” Adrian’s current role as farm manager involves responsibility for every aspect of running a modern meat chicken farm. “We raise 135,000 birds in each batch and we are currently doing about 6.5 batches per year. My brother-in-law, Stephen Wolfe, assists me with this job.” Adrian was this year’s top-performing trainee in the National Certificate in Poultry Husbandry Certificate course (Level 3), whose unit standards and qualifications have been developed by the poultry industry in cooperation with the Primary Industry Training Organisation (PrimaryITO). The one-year Level 3 course is aimed at personnel currently in or progressing towards supervisory or management roles and comprises a mix of on-the-job training, written assessments and attendance

at a block course. Adrian says he found the experience of studying and training for the certificate “very interesting. I got to learn more about other areas of the industry I wouldn’t normally be involved in during the day-to-day running of the farm. On the block course I also got to meet others involved in various roles apart from meat chicken-growing.” Tanya Ingram, Adrian’s course coordinator at PrimaryITO, says “Adrian is a very worthy winner of the 2014 Poultry Trainee of the Year Award. It was highly contested this year, with some very high-calibre trainees, and Adrian displayed exceptional quality in his assessments and in his knowledge at the block course. His attitude and dedication to completing his assessments also never faltered. Being a quiet achiever, Adrian completed the on-farm component of the course with the same commitment. He is a highly valued member of the local Tegel team and his competency with stockmanship and overall ability on-farm is very evident.” Adrian says that his win of the award has encouraged his ongoing quest for excellence. “I enjoy the challenge of trying different ways of improving results,” he says. In that regard he now has even more scope, as his farm has recently expanded by adding a 2300-square-metre shed.



A good day for a walk up the mountain



Fourteen people took part in the Waiaua Hut Walk on January 9. This is the second year the Wave Church has organised a walk from the end of Ihaia Hut to the Waiaua Gorge Hu, passing by the remains of the old Oaonui Hut en route. The walk also passed close to the site of a World War 2 plane crash. Funds from last year’s walk went towards a missions trip to Fiji. Funds from this year’s walk are going towards a missions trip to Thailand next year.

L K WILSON CONTRACTING

AGRICULTURAL CONTRACTORS

**WE CAN DO SILAGE / HAY ROUND BALING / MOWING / TEDDERING /
RAKING / INDIVIDUAL WRAPPING / STACKING BALES
CONVENTIONAL SQUARE BALING**

SERVICING COASTAL TARANAKI

NEW PLYMOUTH-OKATO-PUNGAREHU
AND SURROUNDING AREAS



**TRACTOR & TRAILER / PLOUGHING / POWER HARROWING
DIRECT DRILLING / UNDERSOWING / ROLLING / GROUND SPREADING
HEDGEMULCHING / 3.5 TON DIGGER / EFFLUENT SPREADING**

PHONE : (06)752 4349

LEVI MOB : 027 552 4349

150 GREENWOOD RD, R.D.4

NEW PLYMOUTH

EMAIL : lkwilsoncontracting@hotmail.co.nz



LIKE US ON
FACEBOOK!
OPUNAKE & COASTAL
NEWS

Taratahi graduates told attitude the key

Over 100 people attended the 2014 Taratahi Taranaki graduation ceremony at the Stratford War Memorial Hall on December 16, representing graduates, parents, family, friends, stakeholders, farmers and Taratahi staff. Taratahi CEO, Dr Donovan

Wearing told graduates that the world is their oyster, with opportunities for graduates with the right attitude to make a success of their lives.

Guest speaker Bryan Hocken said graduates with the right attitude, initiative, punctuality and motivation must take their opportunities. He said graduates needed to find a mentor to help them be successful.

2014 Awards. Primary Industries Trade Academy. Most Improved Level 2 PITA Student. Julia Webster. Top Level 2 PITA student Alex Bell.

National Certificate in Farming Skills.(Work Ready) Level 3 programme. Muir Family Trophy. Awarded to the student with the best ability to move and control stock effectively. Bell Kinza Ward.

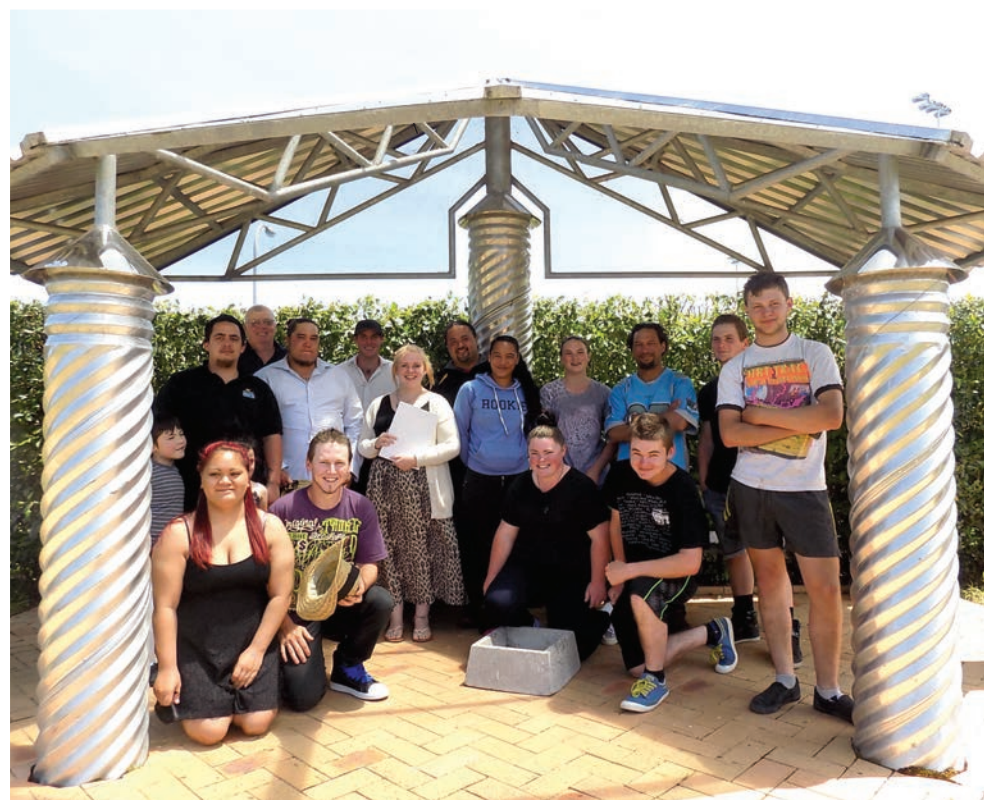
Reardon Family Shearing Award. Awarded to the student with the best hand piece skills. Bradley Taylor.

Stratford Demonstration Farm for Most Improved Level 3 student. Awarded to the student who has improved the most from the start to the end of the year. Darren Middleton.

Taratahi Farm Machinery Trophy. Awarded to the student who is best all-round with quads and tractors. Duane Martinelli.

Williams and Kettle Work Experience Trophy. Awarded to the overall best student in work experience. Liam Taylor.

Fencing Trophy. Awarded to the student with the best fencing skills. Bill Kereti.



Taratahi Level 3 graduates.

Coplestone Family Leadership Trophy. Awarded to the student who is most able to direct

and supervise a team of people. Bill Kereti. National Certificate in Agriculture Level

4 programme. Taratahi Taranaki Tutors Trophy. Awarded to the Top Level 4 student. Mitchell Wooller.

Farmers across ditch told to wisen up on quad safety

New research from James Cook University reveals farmers are confused about quad bike safety, while most manufacturers are resistant to adding safety features to their bikes. It comes after quads this year officially surpassed tractors as the most dangerous piece of farm equipment in Australia, with the majority of fatalities from crush injuries or asphyxia after bikes rolled on riders.

A study from JCU's Mt Isa Centre for Rural and Remote Health and College of Public Health, Medical and Veterinary Science, led by Professor Sabina Knight and Associate Professor Richard Franklin, has found many farmers don't know who to ask about the dangers of the bikes or how to lessen them.

"There is a lot of misinformation out there," said Professor Knight. "Some farmers believed that horses were the most dangerous form of transport on the farm, followed by two-wheeled motorbikes, followed by quads." "In fact it's completely the opposite. Agriculture is Australia's most dangerous industry and quad bikes

are predominately associated with serious injury and death," she said. She said horses wouldn't deliberately get themselves into danger and the risks of two wheel motorbikes were well known, but quads caught many people unaware because of their ease of use and misleading apparent stability.

The study found some farmers and pastoralists had a marked tolerance for injuries to themselves and accepted calculated risks to children as a part of growing up on a farm. Dr Franklin said farmers expect kids to take risks. "The participants told us that there is risk in sport, riding horses, if you break an arm that's how it goes. To them, injury was just a normal part of life." "However we know that with often simple strategies, many of these injuries can be prevented." Dr Franklin said farmers are smart people and it wasn't about talking down to them. "It has to be a discussion about what level of risk is acceptable, the appropriate ways quads can be used and what can be done to

mitigate and prevent harm." "Ultimately, it's about making it safer and making it home. There is not going to be any single magic bullet. Roll bars are one possible solution, as is improving stability. Personal protection equipment and riding skills as well as child safety features will all help." The study found attitudes of retailers and manufacturers were powerful influencers among quad bike customers, but the industry's role in advocating injury prevention and safety activities was minimal, despite being important to ensure the safety of those using quad bikes.

Professor Knight said car makers had vastly improved the safety of their vehicles and it wasn't beyond quad bike manufacturers to deal with instability problems, give the bikes anti-crush devices and instigate a safety rating system so farmers knew what they were buying.

Dr Franklin and Professor Knight said this was the first time academics had engaged with pastoralists in the region on this important subject and there was anecdotal evidence that the study had helped spark a lively conversation in the broader community.

"What is very clear from our work is that farmers and pastoralists need to have a trusted independent source of information about quad bike safety," said Professor Knight.

NZ FARMERS LIVESTOCK

For all your
Livestock requirements
Servicing the Coast

Contact
Tim Hurley - 027 445 1167
Bryan Goodin - 027 531 8511

SCAN WHILE YOU MILK

Rotary & Herringbone - 12 years experience

Date late calves - Only \$ 2/cow

Ph: **PETER & LINDA COLLINS**
06 762 7820 - Txt 027 716 1501

DNS Contracting

Contracting Services Taranaki Wide
Servicing Taranaki Wide

**ON FARM OBLIGATION FREE
EFFLUENT SPREADING QUOTE!**

**12000 Litre Slurry Wagon, PTO Pump with
Rain Gun. New Dual Loading System for
long range effluent spreading**



www.taranakicontracting.com

**CALL ANDREW GRAY ON
0278194818**

BE HERE
IN A YEAR

TAKE THE SMART PATH TO A DAIRY CAREER

Taratahi Agricultural Training Centre can give you the knowledge and skills you need to get out working.

Demand for farming graduates with practical skills has never been higher. So if you want to make the most of this opportunity and be in the workforce earning good money then Taratahi is the place for you.

You'll graduate with an NZQA-approved qualification plus hands on experience to take into your first farming position and kick-start your career. Enrol today for a February 2015 start.

**ENROL NOW
CALL 0800 600 333**

taratahi.ac.nz | taranaki@taratahi.ac.nz



Karel hopes tractors will pull Valentines Day crowd



Get out to the Pihama Cricket Club and watch the big guys in action.

The Pihama Tractor Pull is coming back to a cricket ground near you. The first one, held back in July last year was such a success that organiser Karel Van loo is planning another tractor pull to be held at the Pihama Cricket ground on February 14. When Karel arrived in New Zealand from Holland six years ago, he brought his passion with him, along with his luggage. He had already 25 years experience in tractor pulling, collecting “six or seven

box loads of trophies” along the way. Tractor pulling is big in Europe, and Karel hopes to make it just as popular over here. He says he enjoys getting as much as possible out of his tractors. “Everything is try and test, try and test. Where the engineer stops, that’s the point where we start.” After initially demonstrating tractor pulling at field days, he decided to try his hand at launching a stand-alone tractor pulling event. The result was last year’s Pihama Tractor Pull. “It was the first tractor pull in Taranaki. It was quite interesting. People were saying, we haven’t heard of this before,” he said. The novelty appears to have worked, as a good crowd turned up on a wintry Taranaki day to view the display of mechanical grunt. The rain cleared and the partying continued long after the official part of the day was over. Some did not leave until 3am the next morning, Karel said. “Since then, the interest

has continued to grow, and this has been reflected in social media, with 500 facebook members. The interest has also been reflected in queries about when the tractors would be returning to the Pihama Cricket ground. “People have been saying, when is Pihama, when is Pihama?” Karel said. He said he particularly wanted to thank Rusty Campbell and Campbell Contracting for their help in getting the tractor pull going.

Young Contracting

For all your round silage and hay bale requirements
Contact Kieran Young 0276432721



- * Mowing
- * Tedderring
- * Swathing
- * Round Baling
- * Wrapping
- * Stacking
- * Carting

* Tractor and Trailer Hire available



Tractor pulling action.

For Prompt and Efficient Service
South Taranaki Wide **Call Marc 027 247 6021**



CALL US FOR ALL YOUR CULTIVATION, DRILLING & HARVESTING REQUIREMENTS

- Ploughing	- Direct Drilling	- Mowing	- Loader Wagons
- Power Harrowing	- Roller Drilling	- Tedderring	- Stack Tractors
- Levelling	- Maize Planting	- Swathing	- Trailers
- Tandem Discing	- Spraying	- Baling/Wrapping	- Mole Ploughing



GOPPERTH CONTRACTING

In conjunction with
Andy Davy Contracting
& Gary Langlands Contracting

5672076AA

TARANAKI TRACTOR PULL

PIHAMA CRICKET CLUB



Saturday February 14 from 2pm



Entry information @
Taranaki Tractor Pull
on Facebook
Contact Karel 021 202 0611



CAMPBELL CONTRACTING LIMITED

Proud to support the
Taranaki Tractor Pull

- * Hedge Mulching
- * Re Seeding
- * Hiab Truck
- * Race Maintenance

www.campbellcontractingltd.com



PH: RUSTY 027 280 0743

Busy summer for Opunake Surf Club

It has been a hectic summer this year, with record crowds at all Taranaki beaches, full camping grounds and an influx of overseas travellers leading to one of the busiest summers in over a decade. Finally we have a summer in January Opunake beach surf conditions have been a mixture of flat/calm through to the extremely huge surf, massive rips, and usual currents/undertows. The guards certainly have had to earn their keep this year. Unfortunately our beach has had to be closed on a couple of occasions due to surf conditions and crowd numbers. On both occasions local volunteer guards have been called to help out the paid guards. I have had to request an extra paid guard (funded by the council), and thankfully this was accepted. Those of you that have visited the beach will know about the huge drop in the sand. Overnight due to huge surf one Monday night, this drop has now been filled in, along with the tailrace which was completely covered over (now dug out). Driftwood up on the grass by the carparks, and up the IRB ramp are tell tale signs of how big the surf was on that particular night. At around 9.30pm, I saw one of the biggest waves I have ever seen in my life come into our bay. Thankfully the water was empty, because this wave was huge from the lookout, so imagine being in the water at the time. On the club side, we are progressing steadily. Our junior section is growing, and we have risen from one competitor to around 25 this year. We have just had our local carnival with over 120 kids from Taranaki competing. This was the biggest turnout on our beach for any carnival in over a decade. New lifeguards have been

joining in decent numbers over the last three seasons, and we are only a year or two away from our junior section beginning to provide new guards yearly. Another four guards have recently passed their exam. Our TSB grant has come through, so you will see a brand new Kubota side by side motorbike on our beach next month. We plan to kit this out in first aid gear, and will look at inviting other emergency responders in Opunake to come down and have a look. Our IRB team is continuing to get better and better. We currently have the top under 21 crew in the country, and recently were the top Taranaki club at the North Island champs. Many thanks to Gav Vanner and Trent Oliver for their ongoing support and coaching. I am working with the council on better signage, advising where to swim etc. So far three parties have committed to put funding towards this project. This may take a while, but better to do this once and properly. We have spent the last four years updating all of our rescue gear, with maybe one more season to go. This will leave us around seven years to look at our building with a long term eye on our upcoming centenary due in 2023 (planning never stops). Finally a big thanks to the committee and parents for all of their hard work. A special mention to Mikey Corkill (Steve and Rosie's son) for all of his hard work that goes unnoticed.

PS on a final note, I have a couple of grumps that need mentioning. Freedom campers. Is it me, or am I the only one getting brassed off at our cliff-top lookout being overtaken? Personally I have no problems with the concept, just leave our lookout alone please.



Senior lifeguard Michael Corkill with the newest addition to the Opunake Surf Lifesaving Club.

Parent supervision. It seems to me that parents sitting on their phone, 20 odd metres away from their kids counts as supervision these days.

Worse still, is the amount of kids down the beach with no parents at all. Let's be clear, supervision is being within arms-length of your children

at all times. We are a true west coast beach with bad rips and big tides. We are volunteers, not babysitters, and these are your kids/

grandkids not ours. Attitudes need to change now. See you all at the beach picnic and sounds in the sand Feb 15th Mike Roach (Roachie).

Big Bowling win for Opunake Ladies

The Opunake Ladies have won the top division Inter Club bowls. Playing against the top teams from Taranaki, they played seven games over three Saturdays. Against very tough opposition, they didn't know the final result until the very last game.

Singles. Bev Robinson. Pairs. Nel L'Ami and Kay Fleming. Fours. Joy Collins, Eileen Rothwell, Val Langton and Pat Barrett.

Members were pleased with the result, coming from a small club and unlike larger clubs, not having the numbers to choose from.

On December 8, the Julian Pairs were played. This is a competition for women who



These Opunake ladies are the top bowlers in Taranaki.

at some time have played for a coastal club. Winners

Eileen Rothwell and Val Langton. Runners-Up

Bev Robinson and Wilma Crawford.

WATER DELIVERIES FOR ALL LIFESTYLE AND FARM REQUIREMENTS

Fair pricing - Outstanding service - Call today!



141-143 Connett Rd East
Bell Block
New Plymouth 4312

Ph: (06) 755 9054
Email:
dispatch@symonstransport.co.nz

POWERWORX

Power Supply Rural & Residential

Design, upgrade and repair overhead and underground power supplies

- Powerco Approved
- Underbores - wires and pipes
- Powerline maintenance
- Fault repair
- Subdivision power installation
- Vegetation control around powerlines
- Network connections
- Transformer & line upgrades
- Specialists in rural power servicing and installation

0800 877 746

Taranaki Region
Contact Bruce Wilson Manager
58 Glover Road, Hawera Ph: 06 278 4514
Email: powerworx@obertech.co.nz

Opunake Surf Club foots it in Fitzroy champs

Messy surf accompanied by a cross shore wind didn't stop surf clubs from around the country travelling to Fitzroy Beach to compete in the annual North Island IRB championships. The first major surf based sports event of the season brought forward crews from 15 different clubs including Taranaki clubs Fitzroy, East End, Old Boys and Opunake. The three crews from Opunake Surf Club consisted of Thomas Bell and Jordan Hooper, Nathan Hickey and James Cathie, and Jemma Pentelow and Courtney Keech, as well as patients Kallum Whitehead, Reuben Tulloch, Marlene Ruka and Dylan Arlidge. Though a small team, Opunake concluded the day with some outstanding achievements. Jordan and

Thomas lived up to their title of top under 21 crew in the country in gaining first place in the assembly race and third place in the mass pickup, while women's crew Jemma and Courtney gained second place in mass pickup. In total Opunake was placed fourth in the North Island, beaten by Papamoa, Sunset beach and Waimarama, with East End and Fitzroy following close behind. The next big IRB competition is the National Championships in Dunedin at the end of March 2015, in which the same three crews will be travelling down to compete. A huge acknowledgement goes to team manager Michael Corkill for the endless time and effort he puts into preparation and execution of competitions.



Jemma Pentelow, Courtney Keech and Kallum Whitehead in action. Photo Gary Tosland.

Sparring with Sonny Bill Williams



James Langton (left) and Sonny Bill Williams.

Recently, Opunake's James Langton got a surprising phone call – would he agree to be a sparring partner for Sonny Bill Williams in Hamilton? James, who has won his five last fights, jumped at the chance to spar with the unbeaten boxer/rugby league star/All Black. Arriving in Hamilton to the venue on Friday 16 January James got a shock when he first glimpsed Sonny Bill. “Man you are a big guy,” James muttered to himself. After warming up, James entered the ring to spar four rounds with Sonny Bill. It wasn't four rounds straight, but in pairs of two, with another boxer going two rounds between each pair of rounds James was involved in. What was it like boxing with the iconic sportsman? “It was like my old sparring, but at a higher

level.” James continued, “As it went on I was getting more comfortable and hitting more.” However, he conceded, “After four rounds I was exhausted.” James was most impressed with Sonny Bill as a person. “He's a very humble guy. I had a good chat with him.

He is happy to give you his time.” He added, “He's a professional athlete – one of the best in the world. James has a souvenir of sorts from the experience - a black eye!

James Langton to meet Junior Pati in Waitara early in February

With his last five fights resulting in wins, James Langton's NZ ranking has risen to 13th in the Heavyweight division of professional boxing. He now has a world ranking in the mid 400s and he is keen to see this halved by the end of the year. James faces his next opponent Junior Pati on Friday February 6. The fight will be in the Waitara War Memorial Hall and is on the undercard to Sam Ripia's comeback fight after his recent loss. James respects his opponent greatly. Junior Pati

has won about nine fights – most by knockout. “He's a very powerful puncher,” admits James. James plays great store on being in peak fitness to help him prevail in the fight. “Hopefully my fitness will be better than his,” he comments. “I'll try and pick him off and win by points,” he adds. Junior Pati has a higher NZ ranking at 10. However James feels quietly confident, “I'll win if I fight to my capabilities.” He concludes, “If I beat Junior Pati I'll move into the top 10 and more

opportunities will arrive.” James “absolutely” attributes much of his improvement to the work of his new coach Steve Hartley, who “does the basics very well.” Another guiding light is his wife Kelly. “She's been behind it all. Special thanks to her. Without Kelly there would be no boxing.” A date to keep in mind is Friday June 26 – James is organising another Coastal Rumble.

AGRIMEC AUTO LIMITED

Proud to support James Langton in his latest fight!

38 IHAIA ROAD, OPUNAKE
PH: 06 761 8999 * CELL: 027 722 1191 * A/HRS: 06 761 8946

FREE UPGRADE
COMPACT
VACUUM SHREDDER
with ErgoStart

Vacuum Shredder with great vacuum power and shredding performance. Low emissions with great fuel economy, ideal for cleaning fallen leaves, grass trimmings and other garden debris in domestic applications.

STIHL SH 56 C-E
Engine Capacity 27.2cc
Dry Weight 5.3kg
Air Flow Rate 710m3/h

OPTIONAL ACCESSORIES:
Easily converts from ShredderVac to Blower mode.

SAVE \$100

Upgrade from BG 56 C-E
FREE \$495

Offer valid until 28 February 2015. Terms and conditions apply.

COLLINS SPORTS CENTRE
Tasman St, Opunake Ph 06 761-8778

STIHL®
Right into Outdoor Power Equipment

TRADES & SERVICES

PAINTING & PAPERING

Tradesman - FREE quotes
G & E Lindsay
Ph (06) 752 1113 or 027 651 0148

ACUPUNCTURE Nigel Cliffe NZRA Member, ACC treatment provider. Opunake Business Centre, 23 Napier Street Ph: 06 763 8801 or 027 681 9524

HEARTLAND CONSTRUCTION for building decks. Ph 027 236 7129.

MULTIPLE SCLEROSIS For information and fieldworker services Ph: 06 751 2330 www.mstaranaki.co.nz

Coastal Cleaning Services

If it needs cleaning - you need me. We now mow lawns & cut hedges!
20 yrs exp. Inside or outside. No job too big or too small.
Ph 027 237 8563

Reflections Counselling Services

89 Regan St, Stratford

Tuesday & Wednesday by appointment
Ph 06 765 8280
Faith Smith **MNZAC** Diploma in Counselling **WelTec**

TRAINING

DRIVING LESSONS
Qualified Instructor. Car, truck, forklift, WTR, DG Logbook. Ph: 06 765 8333

FOR SALE

FOR SALE – MASPORT
5 HP Rotary hoe. Top order. Ph 06 272 8027

AIR RIFLES AND PISTOLS for sale from \$85 @ Collins Sports Centre, Opunake 761 8778

FLEE FLEA happy cats and dogs, a nutritional supplement when sprinkled on food deters fleas and improves the coat at Hardys the health shop in Centre City 7587553

FREE FOUND

SURFCASTING ROD end of Kina Road. Ph: 021 385 614

TENDER

1 BEDROOM UNIT (40sqm approx.) for sale & removal situated at 14 Fox Street, Okato. For tender documents please apply Jim Lawn 06 752 4138 or 027 956 6604

LOST

LOST 19cm Silver Belcher Padlock Bracelet, heart shaped, ruby stone in centre of padlock. Afternoon 10 December outside RD1 or 4 Square in Opunake. Reward. Ph: 06 761 8357

SITUATIONS VACANT



OPUNAKE HIGH SCHOOL Support Staff Position

Laboratory Technician (8 hours per week) & **Teacher Aide** (3 hours)

We need a person to prepare resources for science classes. Previous laboratory experience would be helpful but not essential as training will be given. An opportunity also exists for you to assist in the Technology faculty to support teachers.

This is a term time only position. Enquiries welcome, written applications which close 5th February should be addressed to:

The Principal
Opunake High School, P O Box 4 - Opunake
Email: admin@opunake.school.nz
Phone: 06 761 8723

BUS DRIVER FOR SCHOOL RUN

Approx 15-20 hours weekly
Requirements
- P Endorsement and a class 2 driver license
- Full training given to successful applicant
- Suitable only for people based in Opunake, Auroa or Rahotu.
For further details or any queries contact:
Tracey Jury - Manager at Pickering Motors
Ph: 0800 22 11 20 or 761 8363

FOR SALE

1995 TOYOTA CRV \$5000 ono. Please phone 06 752 4377

KNIFE SHARPENING service now in store \$5 per knife. Collins Sports Centre, Tasman St, Opunake

MAGNESIUM OIL sprayed on the skin absorbs quicker than taking orally. For helping to reduce cramps, sleep problems, headaches etc at Hardys the health shop in Centre City 7587553

DO YOU HAVE an intolerance to wine, headaches after a small amount, could be the sulphites. At Hardys we have UB free, wine preservative neutraliser. Shop 18 Centre City 7587553

OHS UNIFORM 3 shirts, size S/P, 2 shorts sized 84R, Jersey size 97, Skirt size 12-14 \$100 Ph: 06 274 5758

WANTED TO RENT

WANTED small flat or house for one person in Opunake area. Preferable in town. Ph: 761 8662

QUIET N/S MATURE FEMALE looking to share house or housesit. Clean, tidy, good with pets. 027 292 5316

WANTED TO BUY

A copy of the following books:

Moa Farmers' Co-operative Dairy Company Limited 75th Jubilee, 1895-1970.
Opunake Co-operative Diary Company Ltd 75th Jubilee, 1899-1974.
Mangatoki School 75th Jubilee 1891-1966.
Mangatoki School & District Centennial 1891-1991 (A century in progress).
Auroa School 75th Jubilee 1891-1966.
Warea School & District Centennial 1884-1984.
Te Kiri School & District 75th Jubilee 1900-1975.
Te Kiri School & District Centennial 1900-2000.
Kaponga Public School Centennial 1891-1991.
Otakeho School & District Centennial 1884-1984.
And also Riverlea & Makaka School & District Centennial 1899-1999 (From Stumps to Strainers).
No photocopies please.
Ph: 06 764 8945 Eltham

WANTED TO BUY

SCRAP METAL South Taranaki. S.O.S. – Ph Dave: 0276058437

SCRAP METAL - for all scrap metal Taranaki-wide, give us a call. Molten Metals (06) 751 5367 www.moltenmetals.co.nz

VIDEO RECORDER head cleaning cassette kit. Ph: 06 764 8945 Eltham

OPUNAKE & COASTAL NEWS

Call us today to advertise 06 761 7016



PUBLIC NOTICES

TE KIRI Sports & Recreation Society

Calling for applications for Scholarship Awards by 20th February 2015. Application forms available
Judith Armstrong
06 761 8052
Margaret Mullin
06 761 7294



Opunake Players Inc. AGM

Saturday 14 February 2015 at
The Lakeside Playhouse,
17 Layard St
from 6.30pm. Pot luck.
Welcome to all.

PUBLIC NOTICES

Playcentre

Welcoming any new families into the area. Come and have a look at our child friendly facilities

Session Times: Tuesday & Thursday 9.30am - 12.30pm

Enquiries Contact Sarah: 06 763 8724

RAHOTU PLAYCENTRE

Whanau tupu ngatahi - Families growing together

CHURCH NOTICES

Opunake & Okato Co-operating Parish CHURCH SERVICES

St Paul's Opunake Co-op & Rahotu

Opunake Cooperating Parish St Pauls, Havelock St, 9.30am every Sunday and the

Rahotu - Wesley - 11am first Sunday of the month.

Oakura - St James - 10am, 2nd & 4th Sundays.

Okato - St Pauls - 10am, 1st & 3rd Sundays.

Opunake Catholic Church

SUNDAY 8.30 am at Pungarehu (St Martins), 10am at Opunake (Our Lady Star Of The Sea).

Other areas

Manaia - Sacred Heart - 1st & 3rd Saturdays at 5pm (2nd, 4th and 5th Sat at Hawera's St Josephs).

Kaponga - St Patricks, Sunday 8.45am

Okato - St. Patricks - Saturday 6pm

RAFFLE RESULTS

VOICE FOR LIFE
Christmas Raffle Result.
Groceries M. Robinson, Groceries C. Stimpson, Groceries C. Donnelly, Biscuits C. Clement, Chocolates M. Brophy. Your support is gratefully appreciated.

OPUNAKE & COASTAL NEWS

Call us today to advertise 06 761 7016



PRESEASON TRAINING

Tuesdays & Thursdays 6.30pm at the Rahotu Domain

RD1/BALLANCE SENIOR A's

Aaron Fisher - 027 243 3270
Doug Tietjens - 027 465 2988
Trent Olliver - 027 683 6986

FBT SENIOR B's

Alan Crowley - 06 763 8255
Rich Corry - 027 724 0270

GOODIN AG SENIOR 3rds

Dean Wadsworth - 027 331 9925
Kent Helms - 027 289 2157

ELDERS/INGHAMS UNDER 21's

Dave Seymour - 027 681 8083
Steve Crawford - 027 303 8423

CLUB CONTACTS

Brent Davies - 027 431 7772
BJ Kettlewell - 027 229 8932

CLUB MEMBERSHIP & SPONSORSHIP PACKAGES

Deb Davies - 027 408 5414

Don't be shy!
ARE YOU RECENTLY Married?
We would love to share your special day with our readers! Send in your photo and details of how you met etc, to: editorial@opunakecoastalnews.co.nz

PUBLIC NOTICES

OPUNAKE RAHOTU VETERINARY TRUST

Financial assistance is available to students to undergo tertiary education relating preferably to agricultural or horticultural studies although consideration will be given to other applicants.

Application forms available from:-

The Secretary

P O Box 117

OPUNAKE 4616

PHONE 761-7150

EMAIL: nevisbrewer@xtra.co.nz



South Taranaki District
creative COMMUNITIES nz

CALL FOR NOMINATIONS South Taranaki Creative Communities Assessment Committee

The arts help us define who we are. They are the richness of our country and the arts of New Zealand are flourishing in our culturally diverse communities in a range of ways.

Do you want to be involved in building participation in the arts at a local level as well as increasing the range and diversity of arts available to your community?

The South Taranaki Creative Communities Scheme is seeking nominations for its Assessment Committee, specifically representatives for the Hawera, Patea and Egmont Plains Wards, youth (15 to 24 years) and Iwi.

The Creative Communities Scheme is jointly administered by Creative New Zealand and the South Taranaki District Council. The Assessment Committee is representative of the community and makes the funding decisions on a local level. Committee members meet twice a year to make impartial assessments of applications based on the scheme's criteria and assessment policy.

If you are an arts practitioner, or a young person aged between 15 to 24 years, or from the Hawera, Patea or Egmont Plains Ward areas, or belong to one of the four local Iwi (Ngā Rauru, Ngāti Ruanui, Ngāruahine or Taranaki) and have an interest in the arts (whether it be language, arts and literature, performing arts, visual arts or arts with cultural links) please complete a nomination form.

Nominations close on 13 February 2015 at 4.30 pm

To get a nomination form go to the South Taranaki District Council website www.southtaranaki.com or contact Creative Communities Scheme Administrator, Maryse Ropiha on maryse.ropiha@stdc.govt.nz or phone 0800 111 323 or 2780555.



invites applications for grants from the

JD BASHFORD TRUST

&

ROYCE NICHOLLS TRUST

Applications are invited to the above Trusts from students who are New Zealand citizens or permanent residents and intend to take up practical farming as a career or be engaged in some occupation or profession directly concerned with primary production and for which special training is required. The combined application will cover both trusts.

Grants are made to students attending or desiring to attend a New Zealand Agricultural School, such as Taratahi or Telford and Universities providing an education in Farming or Veterinary Science only.

The level of individual grants paid is dependent on the amount of funds available, the numbers of students who received grants during 2014 and will be returning for 2015 and the number of new applicants.

Varying amounts are paid to successful applicants depending on their financial circumstances and the course to be taken, after giving priority to:

1. Residents of the South Taranaki and Stratford Districts
2. Residents of other areas of Taranaki
3. Residents of other parts of New Zealand

The grants continue the legacies left by James Dawson Bashford (in 1962) and Claude Nicholls (in 1951). Both South Taranaki farmers had a vision that their legacies would support people with the capacity and drive to contribute as

PUBLIC NOTICES

NEED A HOUSE SITTER?

Hawera to Opunake

Let me take the worry out of your holiday
References Available

MICHELLE - 027 531 7684

www.facebook.com/housesittertaranaki

St. Patricks School KAPONGA

Open for Students

5th February 2015

Phone: 06 764 6563 for information.

School open from February 2nd for enrolments.



Need help getting to your community appointment?

Red Cross Community Transport is here for you – without the worry of transport costs.

Call 0800 733 726 to see if Community Transport operates in your area, and how to book your lift.

0800 733 276
www.redcross.org.nz



NEW ZEALAND RED CROSS
Community Transport

5955944AA



South Taranaki District
creative COMMUNITIES nz

CREATIVE COMMUNITIES SCHEME Funding Local Arts Activities

Applications for funding assistance for community-based arts activities in South Taranaki beginning after Thursday 2 April 2015 are now being called for. Your application will need to meet one or more of the following funding criteria:

- **Broad community involvement** - A project that will create opportunities for local communities to engage with and participate in arts activities.
- **Diversity** - A project that will support the diverse arts and cultural traditions of local communities, enriching and promoting their uniqueness and cultural diversity.
- **Young people** - A project that will enable and encourage young people (under 18 years) to engage with and actively participate in the arts.

Application forms are available from all LibraryPlus Centres, at the Council Contact Centre in Albion Street, Hawera or the Creative Communities Scheme Administrator, or on the Council website www.southtaranaki.com under Funding/Grants.

For further information, please contact Maryse Ropiha, the Creative Communities Scheme Administrator at:

South Taranaki District Council
Private Bag 902, Hawera 4640
Phone 0800 111 323 or 2780555
Email maryse.ropiha@stdc.govt.nz

Applications close **Friday 13 March 2015 at 4.30pm**
(for projects beginning after Thursday 2 April 2015)

Find our
What's On Listings
on page 20!



OUR NEXT ISSUE IS DUE OUT ON

February 13

Call us today to advertise
on 06 761 7016



TANGATA WHENUA LIAISON FUND

The Tangata Whenua Liaison Fund was established to support projects and initiatives which help develop positive relationships between Tangata Whenua, Council and the community as a whole.

This could apply to:

- Marae or other community facilities;
- Cemeteries/urupa or wahi tapu sites; or
- Performing and visual arts.

Applications for grants from this fund are invited from marae committees, hapu or other interested groups or organisations.

Application forms are available from Council's website www.southtaranaki.com, Administration Building, Albion Street, Hawera, any LibraryPlus facility, or the Executive Assistant Community Services.

Closing date for applications is **Monday 23 March 2015 at 4.30pm.**

For further information, please contact Executive Assistant Community Services on 0800 111 323 or maryse.ropiha@stdc.govt.nz

Business Support Networking Event

Monday 2 February 2015

Sandfords Events Centre, 6pm - 8pm

Come along to find out about the great resources available to support your business.

The event is being hosted by Opunake Business Association



South Taranaki District Council and Venture Taranaki work in partnership to help businesses succeed, whether your business is just an idea or well established and looking to expand. The business advisory team are equipped with knowledge and tools to help you and what's more almost all of their services are free.

Taranaki Chamber of Commerce - Hear what your local Chamber of Commerce can do for your business.

Opunake Business Association - Always welcomes new members and ideas.

Arrival from 6.00pm to 6.15pm

Light refreshments and cash bar available

6.15pm Welcome - by event host
Opunake Business Association

6.20pm Introduction to the above organisations

6.45pm Informal networking - your opportunity to meet the team and access the support available.

For more information please contact:

Marcia Haigh, Community Development Advisor
on 0800 111 323 or marcia.haigh@stdc.govt.nz or
any member of the Opunake Business Association



South Taranaki
Alive with opportunity



WHAT'S ON

OPUNAKE COMMUNITY POOLS
Aquafit & lane swimming. A/F – Mon 6:30pm, Tues/Thurs 5:30pm & 6:30pm, Tues/Fri 9am.Lanes – Mon-Fri 6:30-8:30am. Mon 6:30-7:30pm, Tues – Thurs 5-7:30pm.
Public swimmingWeekends & Public Holidays 1-4pm.

OPUNAKE BUSINESS ASSOCIATION
Meet on the 1st Monday of the month at 5.15pm. Now at 61 Tasman Street, behind Opunake Fish, Chips and More.

OPUNAKE COUNTRY MUSIC CLUB
First Sunday of each month at the Opunake Town Hall, 1-4pm. All welcome

BARNEY AND CO
Mondays 1.30pm. St Barnabas Church Hall.Games, friendship, cuppa. All welcome.

ELTHAM HISTORICAL SOCIETY
Corner York and Bridge Streets.Open 1.00 p.m. – 3.30 Thursdays and Fridays

SURF INN
Every day free pool. Every Friday free sausage sizzle from 5. Every Sunday afternoon. Pool competition.

COASTAL YOUNG FARMERS
Meet 2nd Thursday of every month at 7pm at the Okato Bowling Club.

TARANAKI COUNTRY MUSIC HALL OF FAME, MANAIA
Running every Thursday night from 7.30pm, 11 Surf Highway, South Road, Manaia.

EGMONT EUCHRE CLUB
Meets every Thursday 1pm at the Opunake Bowling Club

CAPE EGMONT HISTORIC LIGHT & MUSEUM
Open 11am – 3pm weekends, Bayly Road, Warea.

TODD ENERGY AQUATIC CENTRE
Family fun times 10.30am to 4.30pm.

COASTAL SINGERS
7pm every Thursday night.Contact 761 8654.

ELTHAM BUSINESS ASSOCIATION FRIDAY MARKETS
8am to 1pm, Car park of Touch Point, High Street, Eltham

SCHNITZEL NIGHT
Every Wednesday at the Stony River Hotel, Okato.

TE KIRI SCHOLARSHIP AWARD
Applications are now open for this financial help. Applications must be in by February 2015. (Paid out by 20 April, 2015). Certain criteria exist. Phone Margaret Mullin for application forms on 06 761 7294

NRM FIELD DAY AND BBQ
Wednesday February 4. Refer advert

KAPONGA LIONS CLUB WAITANGI DAY 10KM FUN RUN/WALK
Starts 10am February 6 at Dawson Falls Gate, Manaia Rd and runs to Victoria Park Kaponga. 3km childrens run starts at Hollard Gardens gates.
Free transport to start leaves Kaponga Hall 9.15am and 9.30am. Register at start line. Adults \$10. Children \$5. Family \$20. Spot prizes. BBQ at finish.

INTERNATIONAL CELEBRATION OF WATER PEACE
Jan 30-Feb 1st Nga Motu N.P refer advert in whats on section

BUTLERS REEF
Band-Bad Nut Sat February 14. Refer advert

TARANAKI THOROUGHBREED RACING
Fashion Marquee. Saturday 14 February. Refer advert page 24.

OPUNAKE PLAYERS AGM
Saturday 14 Feb 6.30 at the Playhouse, Layard Street, Opunake

TARANAKI TRACTOR PULL
Saturday 14 Feb from 2pm at the Pihama Cricket Club. Refer advert.

SOUNDS IN THE SAND AND OPUNAKE COMMUNITY PICNIC
Saturday 15 Feb 12.30-3pm


SESQUI CENTENNIAL EVENTS
Library Display short story Competition deadline extension now 28 Feb

PERCY THOMPSON GALLERY GLEN HAYWARD
Feb 6 March 1st. Refer advert.

TARANAKI MASTERS GAMES
March 12-15. Refer advert.

CONNECT15
Connecting people to jobs and careers. TSB Hub, Hawera on May 22-23. Refer advert for full details

HAWERA REPERTORY.
ANZAC by John Broughton directed by Clive Cullen.18 - 25 April 2015.Cinderella by Ben Crocker directed by Donald Campbell.4 - 11 July 2015



LIKE US ON
FACEBOOK!

We would like to let our community readers know that we are now on **Facebook!**

We would value your input and comments and it's also a great way to let us know if you have a story or event that you'd like published.

OPUNAKE & COASTAL NEWS

Under New Management

Sentimentsflowers

in the Moturoa Shopping Centre


508 St Aubyn Street, New Plymouth
p. 06 751 3686
sales@sentimentsflowers.co.nz
www.sentimentsflowers.co.nz



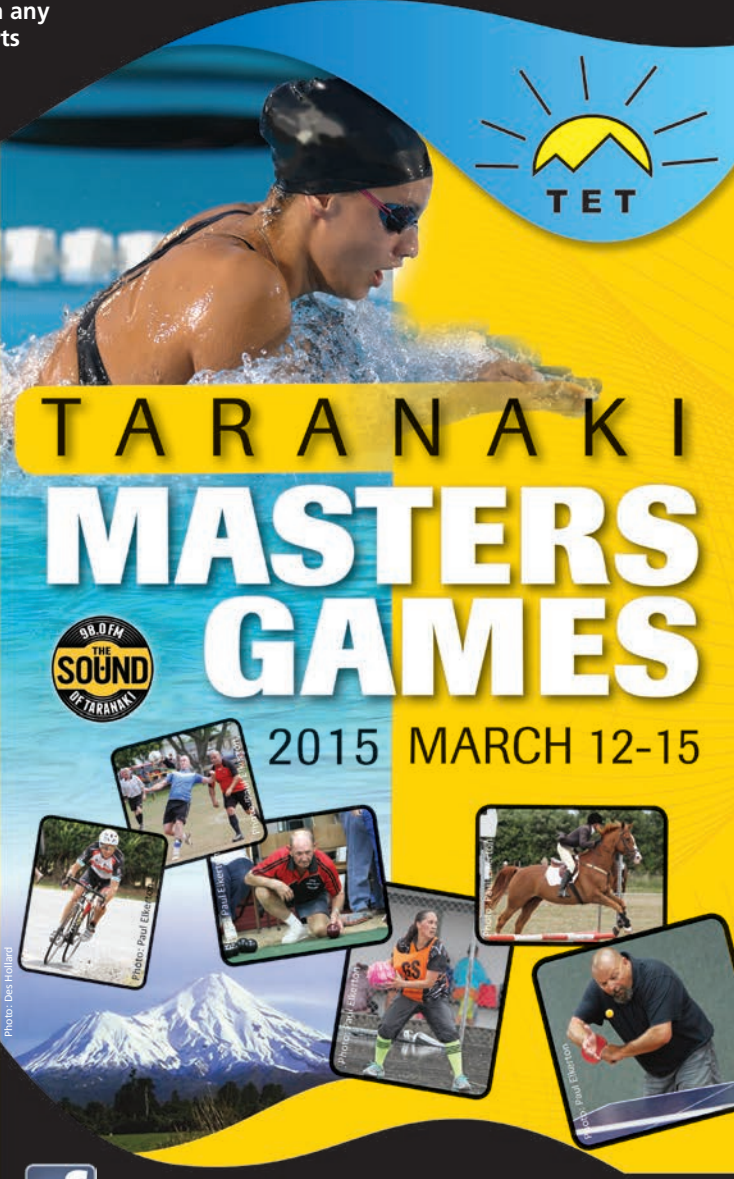
New Gift Range




Register to enter in any of these great sports



Athletics
Croquet
Cycling
Darts
Dog Agility
Equestrian
Football
Hockey
Indoor Bowls
Lawn Bowls
Netball
Pistol Shooting
Pool
Rugby
Running & Walking
Snooker
Squash
Swimming
Table Tennis
Tennis
Texas Hold'em
Poker
Triathlon/
Duathlon
Volleyball
Wine
Appreciation



TARANAKI
MASTERS
GAMES
2015 MARCH 12-15



Phone: 06 765 0255 Email: infotmg@xtra.co.nz
Web: www.taranakielectricitytrust.co.nz

HOUSE OF TRAVEL

Register before Feb 13, 2015 and go in the draw to
WIN A \$2000 TRAVEL VOUCHER
from House of Travel, New Plymouth * Conditions apply

Lots to do at 2015 TET Taranaki Masters Games

TIMETABLE							
Sport	Venue	Min Age	Vairable Dates	Thurs 12th	Fri 13th	Sat 14th	Sun 15th
Athletics	Inglewood	30					
Croquet	Inglewood	50					
Cycling	New Plymouth	35					
	Stanley Rd School						
Darts	New Plymouth	30					
Dog Agility	Normanby	35					
Equestrian	Waitara	35					
Football	New Plymouth	35	Sat 7 March				
Hockey	Stratford	25					
Indoor Bowls	Stratford	30					
Lawn Bowls	Stratford	35					
Netball	Stratford	25					
Pistol Shooting	Douglas	25					
Pool	Stratford	35					
Rugby	Stratford	35					
Running & Walking	Stratford	30					
Snooker	Stratford	35					
Squash	Stratford	30					
Swimming	Stratford	20					
Table Tennis	Stratford	35					
Tennis	New Plymouth	40					
Texas Hold-em Poker	Stratford	25					
Triathlon/Duathlon	New Plymouth	30	Sun 8 March				
Volleyball	Stratford	25					
Wine Appreciation	Stratford	35					
Check out our web site for additional registration & entry forms at www.taranakielectricitytrust.co.nz							

If you are over 20, have a look at the TET Taranaki Masters Games are on again – the core dates are 12 – 15 March, with Football being held on 7th March 7 and Triathlon/Duathlon on March 8.

With 24 events on offer there is plenty of choice for everybody. New to the games this year are Rugby, Hockey and Wine Appreciation and coming back after a short absence, Squash - in a new format – offering a competition for ‘doubles’ only.

The games cater for all levels, social to competitive. Whether you want to compete to complete, or strive to win a medal, there is something for you.

Enter before Feb 13 to go into the draw to win a \$2000 travel voucher.

Check out our website to download your registration and entry form or enter on line. www.taranakielectricitytrust.co.nz

Enquiries to: Bruce Major. bruce@trfu.co.nz 06 759 0167 Ext 863 or 027 281 0145

Triathlon and Duathlon are once again event options as part of the 2015 Taranaki Masters Games.

“Race distances are achievable for most people that are already active” say Ross Dingle, President of the Taranaki Triathlon Club “Whether you are a beginner or experienced athlete, triathlon is a great sport to take part in as an individual or part of a team”. Athletes must be 30 years or older on March 12, making it one of the “younger” masters games events.

This year’s masters games event will be held at Ngamotu Beach with an inner harbour

swim, coastal cycle ride, and picturesque run. The event on 8 March 2015, is slightly ahead of the official master games period, and is run as part of a club event. This gives masters games participants the opportunity to be entered in two events for the one race.

For more information please contact Peter Crawford, pjrcrawford@gmail.com or 021674390

Wine Appreciation is new to the TET Taranaki Masters Games this year. Team HOPE is organising this event as a fundraiser for the charity.

Wine Appreciation aims to be a fun night for a group of friends to get together and enjoy wine tastings of six wines. You don’t have to be a wine connoisseur to enjoy this event. After tasting each wine, questions will be asked about the wine tasted. Supper will be provided on the night.

Get a team together and come along and support Team HOPE and the TET Taranaki Masters Games in this new event. Restricted numbers so don’t delay Enter today

Enquiries to : Donna van den Beuken on 06 765 4484 or bob.donna.vdbeuken@xtra.co.nz

Best of all worlds in Pukeiti excursion

Exotic plants originating from afar and a taste of New Zealand’s pre-history will both be on offer at Pukeiti on Sunday (1 February). A three-hour guided walk will take participants through the world-renowned rhododendron gardens and then deep into the surrounding rainforest and up to the summit of Puketewhiti, the hill overlooking Pukeiti. The event is part of Pukeiti’s family-focused Explorer Day programme, as well as New Plymouth District Council’s summer guided walks programme.

Pukeiti’s rainforest is a unique backdrop for its extensive collection of exotic rhododendrons. The track network takes in regenerating rainforest with remnant pockets of original growth and some ancient rimu trees. The walk starts at the gatehouse at 10.30am. Wear a hat and strong footwear and bring lunch, drink and sunblock. The guided walk route is classed as ‘medium to hard’, but Pukeiti’s network of other paths includes options for all ages and fitness levels.



OPUNAKE HOMEKILL



Call Nikki
Ph: 06 761 8115
027 333 5312

Home Kill Services Taranaki Wide!
We kill and process
BEEF, PORK, MUTTON
& WILD GAME
BOOK NOW
Open: 5 days - 6.30am-2.30pm.



See Sinclair Electrical for your Cooling Compliance Requirements



FREE
on-site quotes!
Call Brian and the team today.

COOLING SPECIALIST WHY WOULD YOU CALL ANYONE ELSE
SINCLAIR ELECTRICAL & REFRIGERATION DON'T DELAY, CALL TODAY
31 Tasman Street, Opunake Ph: 06 761 8084
Okato 752 4084 Manaia 274 8084 Kaponga 764 6084 Opunake 761 8084



Raymond Crowe – The Unusualist coming to New Plymouth

Fresh from travelling the world with a sell-out tour of 50 performances with the prestigious international production The Illusionists 2.0 -The Planets Largest Touring Magic Show, Unusualist, Raymond Crowe now brings his own special magic back to New Zealand.

In February 2015 this highly sought-after entertainer returns with his own intimate, extraordinary and unconventional show. Brimming with originality and unusuality; Raymond's performances appeal to people of all ages. He'll make you laugh, cheer and gasp with his original breath-taking skills and hilarious audience participation, and can be seen at the TSB Showplace in New Plymouth on February 18.

Raymond has charmed audiences all over the world. His amazing signature hand shadow piece performed to the Louis Armstrong classic

What a Wonderful World, was a global YouTube sensation that has now been seen by an estimated 20 million people.

Originally from Adelaide, Australia; as well as being hugely popular in his own back yard, Raymond is a highly respected artiste in high demand overseas. Some of Raymond's amazing performances include the UK's Royal Variety Performance in front of the Queen, Caesars Palace in Las Vegas for NBC's The World's Greatest Magic and The Late Show with David Letterman. There are two ticket prices available; an Adult ticket price and child's ticket price for children aged 12 and under accompanied by an adult.

All shows will be early performances commencing at 7.30pm sharp with a short intermission.



Dale Copeland's latest book to launch

Dale Copeland's latest book International Assemblage will have its New Zealand launch at Stratford's Percy Thomson Art Gallery. The book presents an exhibition of assemblage art by 26 invited artists from seven

different countries. The launch will take place on Waitangi Day from 4-6pm, just before the opening of the Curious Trophies Exhibition. The assemblage shown on the cover will feature in this exhibition.



Don't worry about me is message of new Percy Thomson exhibition



devoid of any utilitarian or functional purpose they might once have held. Hayward's practice endlessly upsets our relationship to the things that surround us, disrupting those divisions we make between art and lived experience."

With his solo exhibition I don't want you to worry about me, I have met some Beautiful People, Hayward turns his hand to the cubicle spaces of the white-collar worker. However, this is not just any cubicle, but a faithful recreation of the iconic office scene from The Matrix, in wood. The film's Mr Anderson has clocked out, but leaves behind those lingering questions about what is real and what is illusory, between virtual

experience and physical experience, individual agency and social control, issues that flow through The Matrix and Hayward's practice.

Another exhibition, Curious Trophies – A group

exhibition that explores our desire to collect and display stuff. brings together an exciting group of artists from around the North Island and includes local favourites Dale Copeland, Carl Fairweather and Roger Morris. The concept of weird and wonderful collections and trophy gathering is something that we all indulge in or strive to stop doing. With over ten invited artists this show promises something for everyone.

Join us to meet these artists and celebrate the openings of these exhibitions on 6 Feb at 6 pm.



I don't want you to worry about me, I have met some Beautiful People

GLEN HAYWARD

6 February – 1 March 2015
Join us for the Opening: Friday 6 February 6pm

Curious Trophies

A group exhibition that explores our desire to collect and display stuff **6 February – 1 March**

PERCY THOMSON
GALLERY
PERCYTHOMSONGALLERY.ORG.NZ

MIRANDA ST.
STRATFORD
06 765 0917

International Celebration of

water
* peace

Jan 30 - Feb 1st
Nga Motu | New Plymouth

Friday 30th January 9-11pm
Night projections | Meet at Boat Shed
Pukekura Park

Saturday 31st January 11am - 4pm
International Day | Huatoki Plaza

Sunday 1st February 11am-4pm
Walking Symposium | Meet at Wind Wand

For full programme go to
www.intercreate.org
Saturday activities are for all ages. Booking is not required

Sponsored by
matahiapo

Intercreate.org

TSB Community Trust

creative.nz

WIT

SCANZ
2015

Percy Thomson Gallery is pleased to present I don't want you to worry about me, I have met some Beautiful People, produced by Glen Hayward during his Rita Angus Residency in 2012 and exhibited at the City Gallery Wellington and Christchurch Art Gallery Te Puna o Waiwhetu's project space in 2013.

Hayward is known for his sculptures of everyday, mass-produced items. Carved from wood and painted exactly as they were as found objects, they masquerade as the real.

Aaron Lister, curator of Hayward's exhibition at the City Gallery Wellington, says: "Hayward's acts of making, re-making and re-presentation variously render these objects and the world they belong to strange, hilarious, or threatening. These objects are returned to the world, but now as simulations that perfectly replicate the original, yet are

NEW Opunake Community Pools Opening Hours Effective 2 Feb 2015							
	MON	TUES	WED	THUR	FRI	SAT	SUN
Lane Swimming (excl Pub Hols)	6:30-8:30am 6:30-7:30pm	6:30-8:30am 5 - 7pm	6:30-8:30am 5 - 7pm	6:30-8:30am 6:30-7:30pm	6:30-8:30am		
Aqua Fit	6:30-7:15pm	9-10am 5:30-6:15pm	NEW! 5:30-6:15pm	6:30-7:15pm	9-10am		
Public (incl pub hols)						1-4pm	1-4pm

The Lion under the Mountain

The Kaponga Lions Club has been going for 42 years, and now has 37 active members. There is a good mix of town and country with ages ranging in age from the 30s upwards.

While focused on serving the community we live in, we also get together with our families socially as well.

We meet twice a month on a Monday, and one of these is a dinner meeting where we often have guest speakers, ranging from members, community leaders, to company directors and representatives.

Activities with other clubs and organizations in the area are also a feature of what we do.

We hold club barbecues and dinners and during the summer months we do things like monthly Fish and Chips/BBQ nights at the Beach.

We also do kids events for our children and other club outings.

We have distributed some \$30 000 dollars back to the community over the last twelve months through activities such as Slink Calves, donations to local school

Celebrating Sesqui with Sounds on the Sand

Sounds on the Sand is back again and helping Opunake celebrate 150 years!

The South Taranaki District Council is bringing music to Opunake Beach on Sunday February 15 from 12.30pm.

But before the band kicks off, be sure to join in the 150 years celebrations for Opunake. There will be a bouncy castle as well as sack and three-legged races on the beach before a community picnic at 12noon.

“This is always a fantastic, relaxing day,” says Sounds on the Sand organiser Jody Bloor. “It is great to work with the 150 Years of Opunake District committee to combine these events. So come along, bring the kids and a picnic. Sit back and relax, enjoying the sounds from the band ‘The Blistered Fingers’ and the waves crashing on the beach.”

The Blistered Fingers play rock ‘n roll blues and a collection of classic rock ‘n roll covers from the 60s and 70s. Their style incorporates a more modern take on the classics, changing songs up a bit to give a bit of their own taste.

If you want to take the

children, various groups, and a large number of local and national charities.

We ran a summer and winter dinner for senior citizens as well as running a community health day where we got health professionals to come to Kaponga.

Medi books were also distributed last year to this group free of charge.

We have also supported various community events by providing marshalls and assistance when required.

We run a Fun Run/Walk on Waitangi Day every year which starts from Dawson Falls Gates to Kaponga as well as a Cross Country Bike Ride held in early March across local farms and finishing at Hollards Garden.

We also run the Speech Maker and Peace Poster competition for local school children.

Contacts. Trevor Hurley(president)Ph:06 274 5664 or Colin / Shelley Pope 06 764 6429.



**KAPONGA LIONS
WAITANGI DAY
10KM FUN RUN / WALK**
Friday 6th February 10am
10km Starts from Dawson Falls Gate at the top of Manaia Rd and runs to Victoria Park Kaponga.
(3km Children's Run starts from Hollard Gardens gates)
Free transport to the start leaves from Kaponga Hall at 9:15am and 9:30am.
Register on the day at the start line.
Adults \$10 Children \$5 Family \$20
Spot prize draw BBQ available at Finish





**Picnic Baskets available from
Soul Kitchen
in Sandfords Event Centre**

Contact: Belinda Philp
06 761 7115 or 027 935 6191 soul4kitchen@yahoo.co.nz

hassle out of packing your own picnic then take advantage of the Opunake High School hangi which you need to pre order, phone 027 455 2217 or how about a delicious pre packed picnic from Headlands 06 761 8358 or Sandfords Event Centre café, Soul Kitchen 027 935 6191.

“All we need now is some great summer weather like we had last year.”

Our next issue is due out
February 13
Phone us today to advertise on
761 7016



Surf Inn
Every day **FREE POOL**
Every Friday from 5pm
FREE Sausage Sizzle
Every Sunday afternoon
Pool Comp

SURF INN, TASMAN ST, OPUNAKE 761 8387

**OPUNAKE
SESQUICENTENNIAL**
www.facebook.com/opunake150



Sesquicentennial events February 2015

LIBRARY SESQUICENTENNIAL DISPLAYS

There is a display of weaving by the Egmont Community Arts Council supported by Creative Community funding.

The Surf Club display in the Library has received a lot of interest and visitors. Thank you Michael Roach and the team.

Next Library display will be the 'Show and Shine' Car club. All groups now have a locked display case to use as part of their display .Thanks to Puke Ariki. Contact Lennie Stimpson or June at the Library to book your display

HISTORY BOOK, is now complete, and at the printers. Pre order copies are only \$15. After February 13 they will be \$20. Check details at Opunake Library Plus. A big thank you to all those who submitted stories and photos for this.

OPUNAKE BEACH PICNIC

15 February. A fun and games day with prizes for all, plus music. From 11am to 3pm. At 11.30 the sand will be marked with 150. Picnickers will be invited to form a human 150 to be photographed from above by Opunake High School Drone and the Daily News from the Cliff top. Bring your own picnic or pre order food. Details at Opunake Library Plus. Don't forget the sunscreen!

SHORT STORY COMPETITION

Many budding authors have requested a deadline extension. This is now 28 February. Lots of prizes thanks to Lysaght Watt Trust and 'Paper Plus' in Stratford and New Plymouth

SESQUI CENTENNIAL MEMORIAL

Reminder that we are looking to build a memorial for our Sesquicentennial. Written/drawn suggestions please with contact details into box on Opunake Library

Everybody's Theatre

Opunake - MOVIES - BOUTIQUE THEATRE – HIRE
For information email everybodystheatre@gmail.com or check Facebook- Everybodys Theatre

February 2015 TICKETS: Upstairs Adults \$10, Students 4-16 \$8 Under 4 Free
Downstairs All \$12, Senior Citizens \$8 No Eft-pos

THE WATER DIVINER – 1st February Boutique Night \$25
Includes wine/beer, tasty treats and comfy sofa viewing
Drama | PG | 1hr 51min
After the Battle of Gallipoli, in 1919, an Australian farmer, Connor (Russell Crowe), travels to Turkey to find his 3 missing sons. While staying at a hotel in Istanbul, he meets Ayshe (Olga Kurylenko), the hotel manager. And tries to find a way to Gallipoli. **1ST February 6:30 for a 7pm start.**
TICKETS AVAILABLE FOR THE BOUTIQUE AT OPUNAKE POST & LOTTO or phone 0273137494
Normal viewing upstairs at \$10 Also on 6 February @ 7pm.


Penguins of Madagascar
Animation | 1hr 32 min| PG|
Super spy teams aren't born...they're hatched. Discover the secrets of the greatest and most hilarious covert birds in the global espionage biz: Skipper, Kowalski, Rico and Private.
14 February @1pm, 18 February @ 3:30pm, 28 February @ 1pm

Amazonia
Documentary, Kids, Family | 1hr 23min |G
After a plane crash, Sai, a capuchin monkey born and raised in captivity, finds himself alone and lost in the wilderness of the Amazon jungle. Facing a new world in which dense and luxuriant vegetation covers everything, Sai has to find his way and protect himself from the traps Nature has laid out. **Rialto 7th February @ 1pm**

American Sniper
Drama, Action & Adventure |R16|2hr 14min
U.S. Navy SEAL sniper Chris Kyle is sent to Iraq with only one mission: to protect his brothers-in-arms. Warner Bros **8th & 13th February @ 7pm**

Taken 3
Action & Adventure|R13| 1hr 33min
Liam Neeson returns as ex-covert operative Bryan Mills, whose reconciliation with his ex-wife is tragically cut short when she is brutally murdered. Consumed with rage, and framed for the crime, he goes on the run to evade the relentless pursuit of the CIA, FBI and the police. Fox **15th February @ 7pm**

Night at the Museum 2: Secret of the Tomb
Action & Adventure, Comedy |PG| 1hr 30min
Get ready for the wildest and most adventure-filled Night At the Museum ever as Larry (Ben Stiller) spans the globe, uniting favorite and new characters while embarking on an epic quest to save the magic before it is gone forever. Fox **31st January @ 1pm, 4th February & 11 February @ 3:30pm**



WEDNESDAY	FRIDAY	SATURDAY	SUNDAY
	Jan 30 @ 7pm St Vincent	Jan 31 @ 1pm Night at The Museum2: Secret of the Tomb	Feb 1 Boutique 7pm Water Diviner
4 @ 3:30pm Night at The Museum2: Secret of the Tomb	6 @ 7pm Water Diviner	7 @ 1pm Amazonia	8 @ 7pm American Sniper
11 @ 3:30 Night at the Museum 2: Secret of the Tomb	13 @ 7pm American Sniper	14 @ 1pm Penguins of Madagascar	15 @ 7pm Taken 3

Broods on an evergreen tour

After spending the last few months touring across the USA as special guests of Sam Smith, next February Broods will return home for their biggest New Zealand tour to date; taking in six major centres and performing to all age crowds everywhere. They perform at the TSB Showplace, New Plymouth on February 12.

This year's breakout headline tour sold out at lightning speed, and further shows had to be added to meet public demand. This time Caleb and Georgia Nott aka Broods will bring their outstanding show to Wellington, Nelson, Christchurch, New Plymouth, Auckland and Hamilton.

The duos' career to date has been fast paced and high impact. Debut album Evergreen was released in August and

included massive hits 'Bridges', 'Never Gonna Change', 'Mother & Father' and brand new single 'L.A.F'. Produced by prominent New Zealander Joel Little, the album went straight to #1 on the NZ Top 40, Top 5 in Australia and Top 40 on the US Billboard Hot 100 charts and cemented Broods as ones to watch.

They've also toured with the likes of Ellie Goulding, HAIM, CHVRCHES and there are more overseas dates to be announced. Performing live is where Broods have found their natural home.

"Touring has made us realise how important it is to not just be yourself, but to back yourself." Georgia says. "If you're not being true, you'll never stand out." Over an ever-growing itinerary of performances across the globe the

bands' sound and light show has become crucial. They've had to learn how to dance like no-one is watching, and sing like no-one is listening.

"We've loosened up a lot," says Caleb "We're in the moment and we're focussed on making it special every time."

They've been nominated for the prestigious APRA Silver Scroll Award, Vodafone Single Of The Year, Vodafone People's Choice and Breakthrough Artist Of The Year at 2014's Vodafone New Zealand Music Awards and Broods international success story is no secret.

Amongst their hectic touring schedule it is an absolute treat for their home country fans that they are playing such an extensive New Zealand tour.



The duo Broods - Caleb and Georgia Nott.

Closed Te Kiri School keeps on giving

When Te Kiri School was forced to close in 2003, money was invested to set up a scholarship for past and present Te Kiri residents. Since then, scholarships have been paid out annually in March, with applicants using their scholarships to further sports opportunities, for academic studies, industry or service training and apprenticeships,

or art and music and other special interests.

The Te Kiri Sports and Recreation Society is again seeking applications for this year's Scholarship Awards.


This strong rural community is very proud to still be able to continue supporting past and present residents in their endeavours to improve themselves. Applicants must

have attended Te Kiri Primary School, or lived in the designated Te Kiri community area for at least two years. There is no age limit to apply for the scholarship.

There is now a display board listing successful applicants at the Te Kiri Hall, so have a look next time you are there. Application forms are available from Judith Armstrong

06 761 8052 or Margaret Mullin 06 761 7294.

**OUR NEXT
ISSUE IS DUE
OUT ON
FEBRUARY
13TH
PHONE US
TODAY TO
ADVERTISE**

What's On 

BAND - 'Bad Nut'

**Saturday February 14
from 8.30pm
in the front bar - No cover charge**

**1133 Main South Rd, Oakura
Phone 06 752 7765 - www.butlersreef.co.nz**



FASHION MARQUEE

**12pm Saturday 14th February,
Parade Ring Lawn, Pukekura Raceway.**

Join us for Valentine's Day at Pukekura Raceway for the glamour day of the summer carnival filled with trackside fashion, fun, and famous faces. Featuring a thrilling line-up of races including the Hooker Pacific Taranaki Cup, the day also includes the hotly contested Silk Spa Fashions On The Field.

If you want to be right amongst the action why not book a table in the Fashion Marquee, hosted by TV3 personality and fashionista, Kate Rodger.

Fashion Marquee package includes:

- Admission to the course
- Exclusive entry to the Fashion Marquee
- Reserved seating
- Members privileges for the day including access to the La Mer Lounge facilities and amenities
- Prime viewing of the Silk Spa Fashions On The Field
- Race book and TTR pen for each guest
- Relaxed Summer buffet
- A piccolo of Lindauer Summer Blush upon arrival ①
- VIP access to the The Nimue Powder Room for hair and/or make-up touch ups ②
- TAB betting facilities and Trackside TVs

Tickets \$550 for a table of ten ③

**FOR INFORMATION OR BOOKINGS, CONTACT SONYA COLE
☎ 06 757 5759 ✉ sonya.cole@taranakiracing.co.nz**

① Option to pre-purchase a beverage package of 4 drinks for \$20.
② The Powder Room will be providing hair & make-up touch ups, for just \$15, with proceeds going to Taranaki Women's Refuge.
③ The booker will receive a voucher for a complimentary touch-up.

Terms and conditions: Tables of ten only.

SUMMER SALE

All Womenswear

50% off

Shoes, Dresses, Shorts, Tops, Pants, Skirts

Just a few exceptions

25% off all menswear at Inglewood

Saturday Hours

Moturoa 9.30 – 1pm | Inglewood 9.30 – 2pm

www.martinsfashions.co.nz



MARTINS FASHIONS

INGLEWOOD • MOTUROA, NEW PLYMOUTH